

***NH Route 108 Complete Streets Improvements
Dover - Somersworth - Rochester 29604***

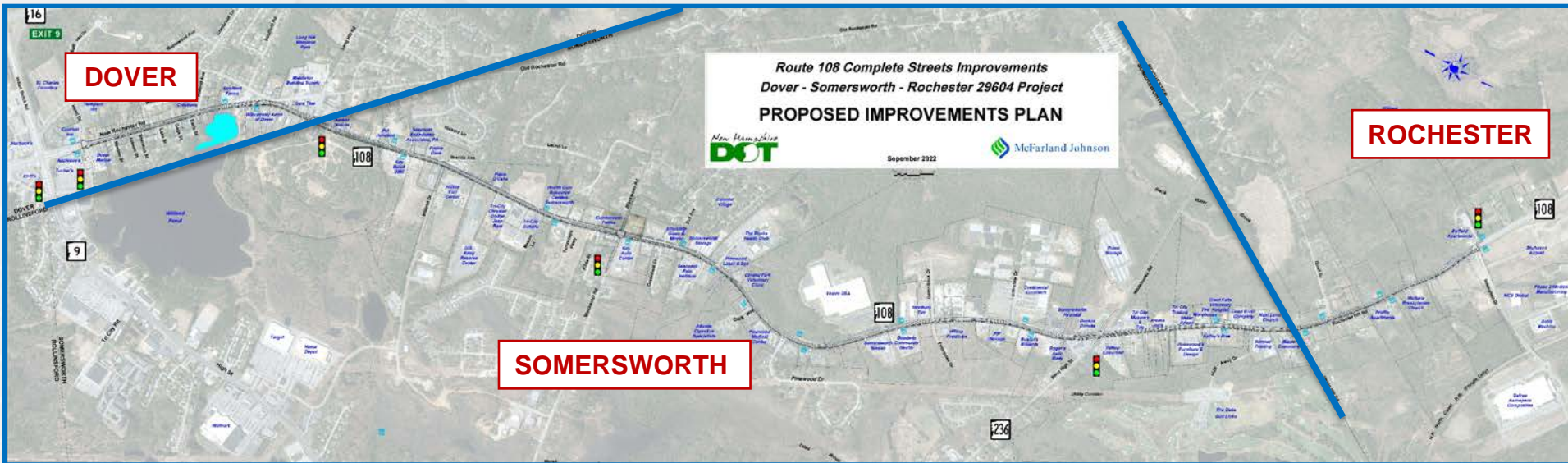
**Public Informational
Meetings**

September 19, 21 & 26, 2023

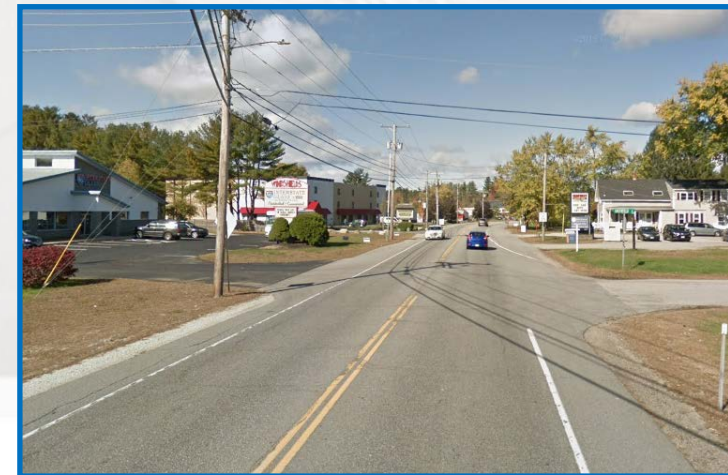
Agenda

1. Project Background
2. Project Working Group
3. Purpose and Need
4. Key Resources
5. Alternatives Development
6. Crosswalk Locations
7. Proposed Improvements
8. Next Steps
9. Questions and Comments

Project Background - Existing



- 4.4 Miles
- 3 Cities (part Urban Compact)
- 2 / 3 Lanes
- Shoulders Vary
- Minimal Sidewalks
- Existing Concrete Slab
- COAST Bus Route 12



Complete Streets

A Complete Street is a street designed for all users independent of their age or ability and regardless of whether they travel by car, bus, train, bicycle or walk.



Project Working Group

NH Route 108 Complete Streets Working Group

Name/Position	Affiliation
Rad Nichols , Executive Director	COAST Bus
Michael Williams , Director of Operations	COAST Bus
Donna Benton , Director of Planning & Community Development	City of Dover
John Storer , Community Services Director	City of Dover
Ken Mavrogeorge , City Engineer	City of Dover
Amelia DeGrace , Asst. City Engineer	City of Dover
Jill Semprini , Asst. City Engineer	City of Dover
Michelle Mears , Director of Planning & Community Development	City of Somersworth
Mike Bobinsky , Director Engineering	City of Somersworth
Amber Hall , City Engineer	City of Somersworth
Peter Nourse , Director of City Services	City of Rochester
Shanna Saunders , Director of Development & Planning	City of Rochester
Jen Czysz , Executive Director	Strafford Regional Planning Commission
Colin Lentz , Sr. Transportation Planner	Strafford Regional Planning Commission

- Dover, Somersworth & Rochester
- Planning Commission
- COAST
- Formal Meetings

Listening Sessions and Walking Tour

PUBLIC INVITED

WALKING TOUR

NH Route 108 Complete Streets Project

The New Hampshire Department of Transportation (NHDOT) invites the public to attend a Walking Tour for the proposed improvements to a 5-mile section of NH Route 108 in Dover, Somersworth, and Rochester. This Walking Tour is being held to seek community input on the corridor and desired changes that would follow the principles for a Complete Street. A Complete Street balances the needs of motorized, non-motorized, and transit users.

WHAT: WALKING TOUR

WHEN: Thursday, June 27, 2019
4:00 PM - 7:00 PM

WHERE:

- Intersection of Blackwater Road/ NH Route 108 (4:00 PM)
- Intersection of Long Hill Road/ NH Route 108 (5:00 PM)
- Intersection of West High Street/ NH Route 108 (6:00 PM)

WHO: You! Residents, Business Owners, Commuters, Local Officials, Elected Officials

You are invited to attend a Walking Tour with the project design team. Join us at one intersection or at all three. Safety vests will be provided by NHDOT for attendees. Please wear sturdy walking shoes and bring water.

For further information, please contact Wendy Johnson, NHDOT Project Manager at Phone: (603) 271-2171 or Email: wendy.johnson@dot.nh.gov. Any individuals needing assistance or auxiliary communication equipment due to sensory impairment or other disability, should contact the Bureau of Right-of-Way, NHDOT, PO Box 483, Concord, NH 03302-0483 or call 603-271-3222 – TDD Access: Relay NH 1-800-735-2964. Notification for the need of assistance should be made at your earliest convenience.

New Hampshire **DOT**

 McFarland Johnson

For more information visit www.108TriCityCompleteStreets.com

Listening Session #1

- March 18, 2019 Dover

Listening Session #2

- May 2, 2019 Somersworth

Walking Tour

- June 27, 2019

Purpose and Need

Purpose

The purpose of the NH Route 108 **Complete Streets** Improvements project is to provide a corridor that accommodates various modes of travel including cars, trucks, **public transit**, **bicycles** and **pedestrians** that incorporates **safety** improvements, while addressing **daily congestion** issues along the five-mile corridor in Dover, Somersworth and Rochester.

Purpose and Need

Need

- Peak period traffic demand causes queuing and **delays** at key signalized intersections.
- Vehicles regularly travel at **speeds** above the posted limit throughout the corridor.
- **Left turns** from and to the corridor are difficult due to the high volume of traffic causing delays and safety concerns.
- Limited **pedestrian** facilities are present in the corridor.
- Formal **Bicycle** facilities are not present in the corridor.
- **Buses stopping** at the numerous bus stops along the corridor often block traffic, causing delays.
- **Facilities** for waiting passengers are not present at the majority of the **bus stops**.
- **Streetscape and landscape elements** are lacking along the corridor.

Key Resources

The evaluation of environmental and cultural resources impacts within the project limits is on-going. The resources and impacts of the chosen preferred alternative will be documented in an Environmental Study/Section 4(f), which will be posted on NHDOT's web site.

Environmental Resources that are potentially present and which are being evaluated in the vicinity of the project area include: Willand Pond (a Class A waterbody), Public Water Supplies, Recreational Areas, Perennial Streams, Floodplains, Conservation Lands, Wetlands, the state-endangered plant (Northern Blazing Star), and the federally-endangered Northern Long-eared Bat.

Cultural Resources within the project consist of several properties potentially eligible for listing of National Register of Historic Places a potential historic district, sensitive archaeological sites, and cemeteries. For Cultural Resources, the project will need to comply with the requirements of Section 106 of the National Historic Preservation Act of 1966. This Act requires the Department to identify and assess the project's impacts to cultural resources, which are buildings, historic districts, and structures, as well as archaeological sites, that are generally greater than 50 years old.

These regulations offer individuals or organizations with a demonstrated interest in the potential impacts to historic resources an opportunity to become more involved in an advisory role through meetings and commentary. They may become what are known as Consulting Parties under Section 106 of the National Historic Preservation Act.

The lead Federal Agency for this project is the Federal Highway Administration. Although the role of a consulting party is advisory in nature, FHWA must consider a consulting party's input carefully before making a final decision on how the project will affect historic resources.

Consultation recognizes the importance of local involvement in the decision making process. If you wish to become a Consulting Party, please contact me after the meeting for information on contacting FHWA or to obtain a pamphlet on the process.

Surveys have been conducted during the development of this project. The Department will continue to coordinate with the Federal Highway Administration and the NH Department of Historical Resources regarding the impacts and mitigation to the historic resource located within the project limits.

Additionally, the Federal Highway Administration's Section 4(f) of the DOT Act regulations require the evaluation of impacts to historic resources to determine whether alternatives which avoid or minimize impacts to these properties are reasonable or prudent.

Contact Information:

*Mr. Jamison S. Sikora
NH Division Environmental Programs Manager
Federal Highway Administration
jamie.sikora@dot.gov*

*J.C. Cleveland Federal Building
53 Pleasant Street, Suite 2200
Concord, NH 03301*

Willand Pond

Key Resources

Natural Resources

- Willand Pond
- Wetlands (Sporadic)
- Rare Plants

Cultural Resources

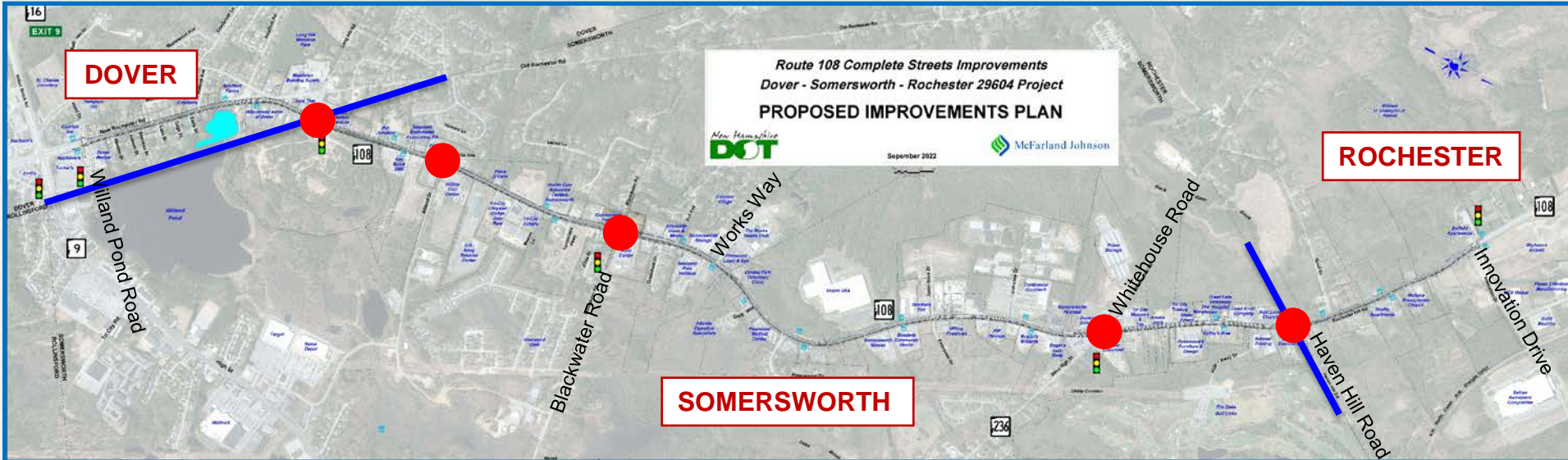
- 4 Historic Properties
- 5 Archeologically Sensitive Areas



Willand Pond

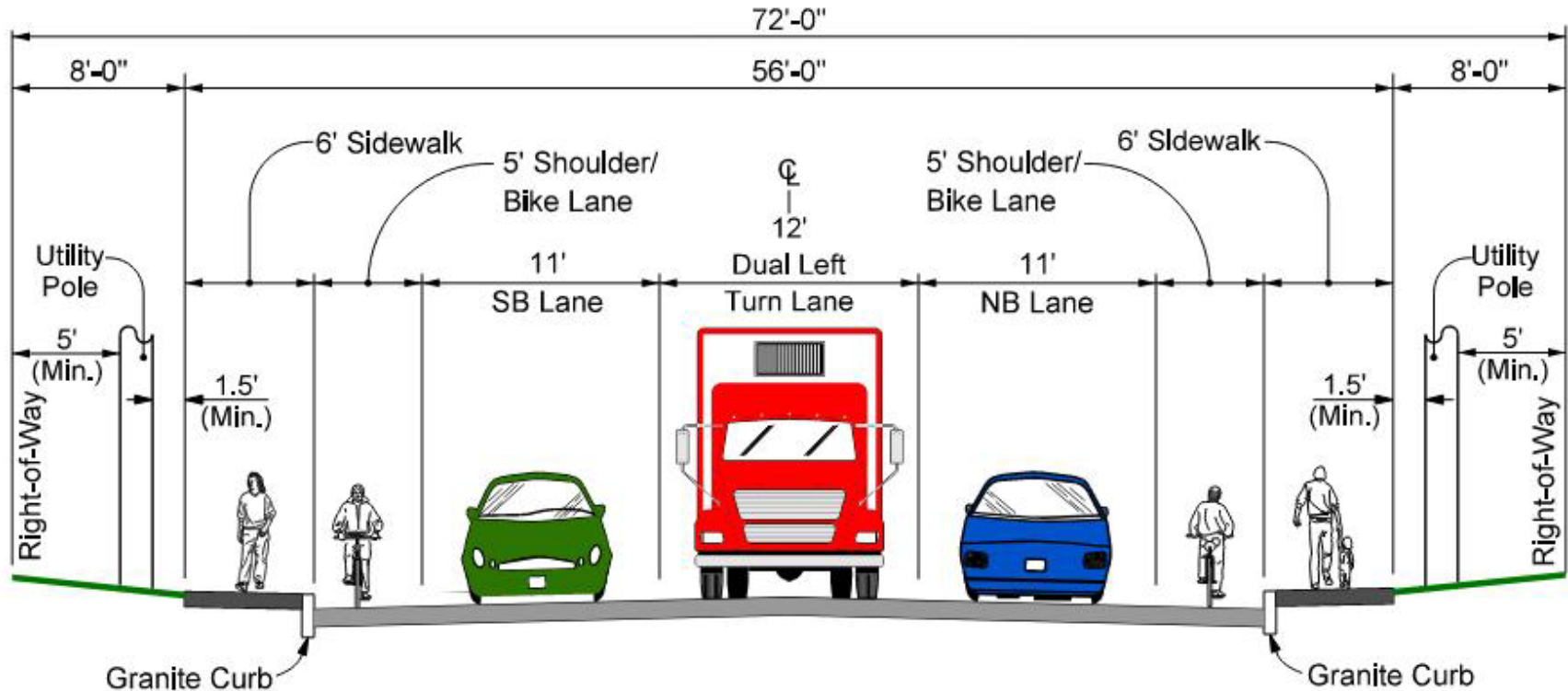
Please note that Section 106 of the National Historic Preservation Act offers those that possess a direct interest in historical resources, including town officials, Historical Societies, and Historical Commissions, an opportunity to become more involved in an advisory role during project development as “Consulting Parties.”

Alternatives Development



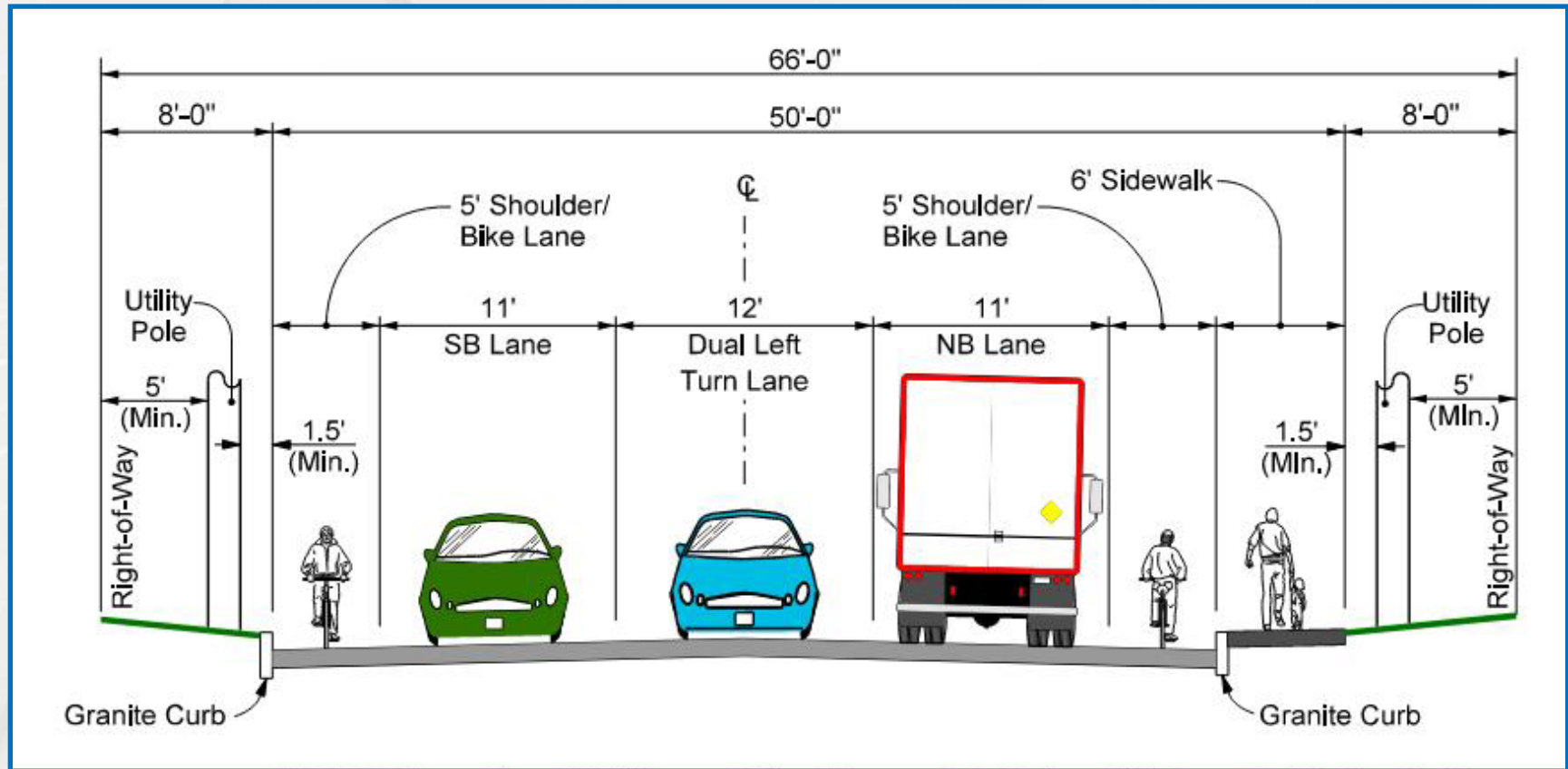
- Route 108 Lane Configuration
 - 2, 3, 4 & 5 Lanes
- Shoulder / Bike Lanes
- Sidewalk Accommodation
 - One vs Both sides of Route 108
 - Crosswalks
- Intersection Configuration at Key Locations ●
 - Signalization
 - Roundabouts

Alternatives Development – Typical Section



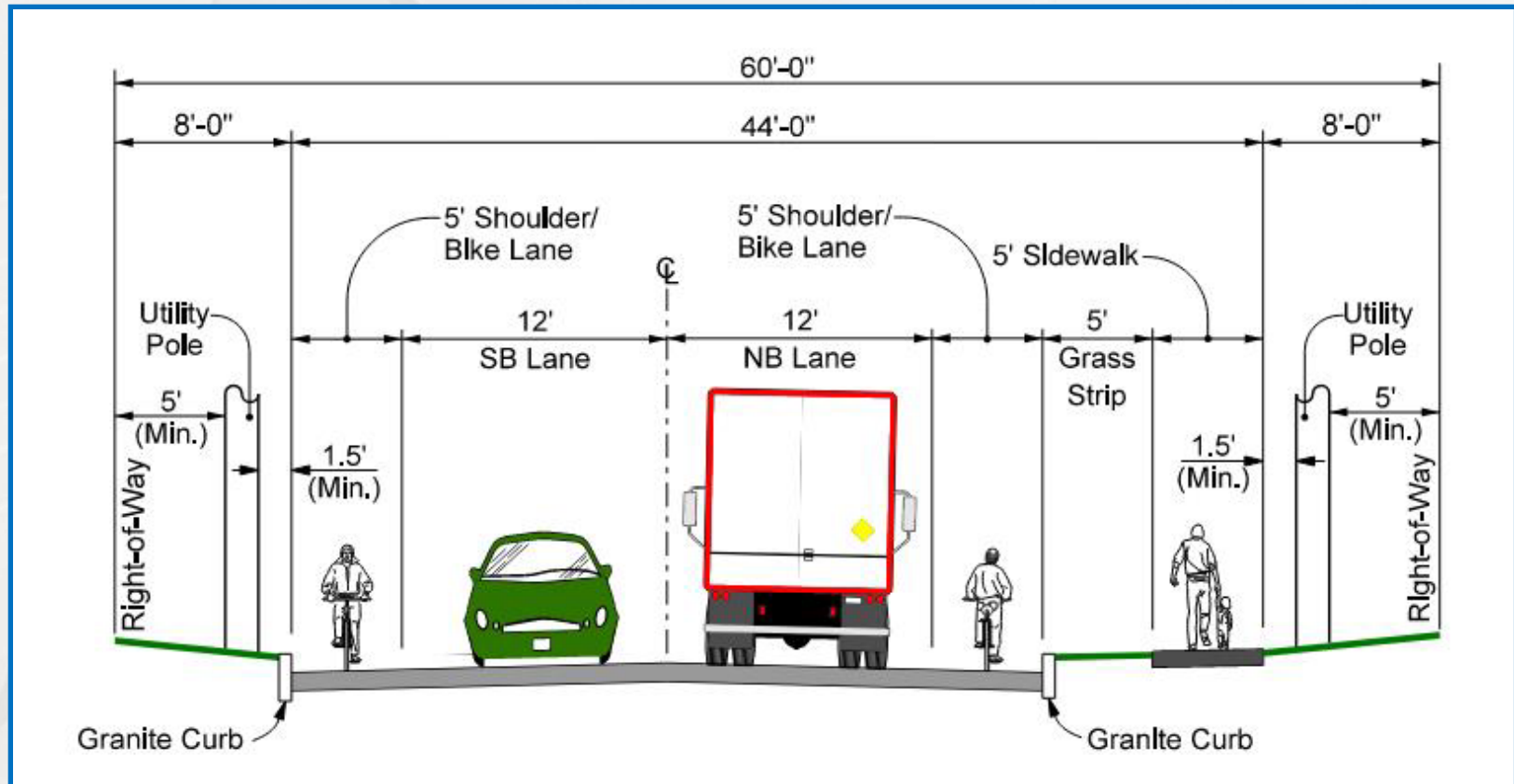
**Typical Section – Three Lanes with Bike Lanes & Sidewalks on Both Sides
(Willand Pond Road to Works Way – 2.0 mi)**

Alternatives Development – Typical Section



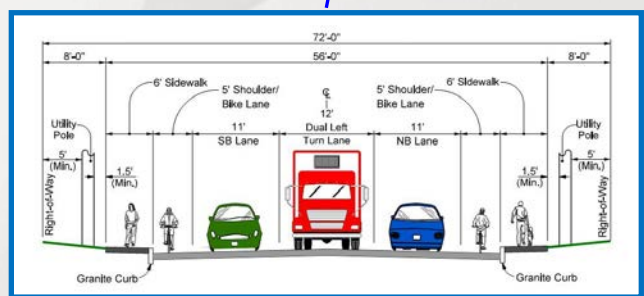
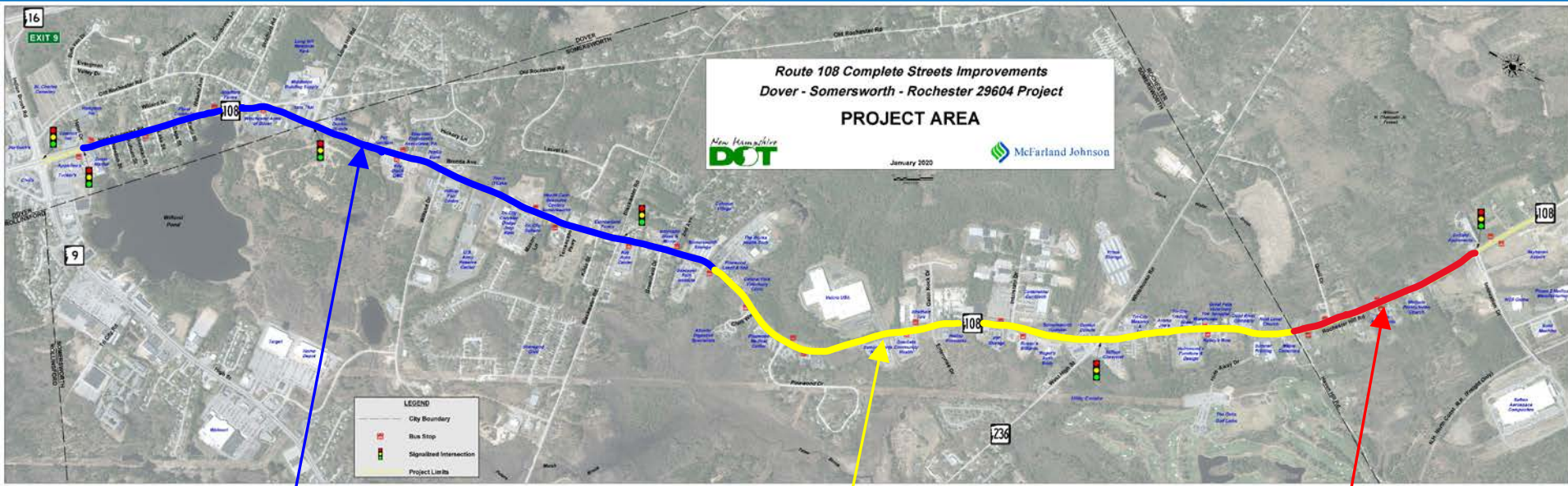
**Typical Section – Three Lanes with Bike Lanes & Sidewalk on East Side Only
(Works Way to Haven Hill Road – 1.8 mi)**

Alternatives Development – Typical Section

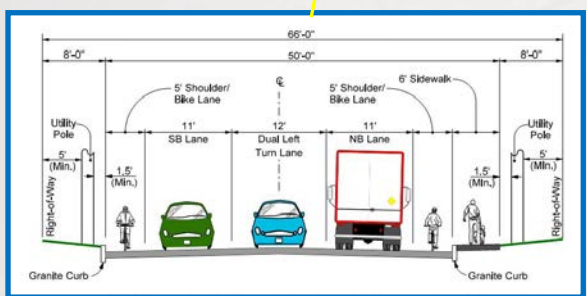


**Typical Section - Two Lanes with Bike Lanes & Sidewalk on East Side Only
(Haven Hill Road to Innovation Drive – 0.6 mi)**

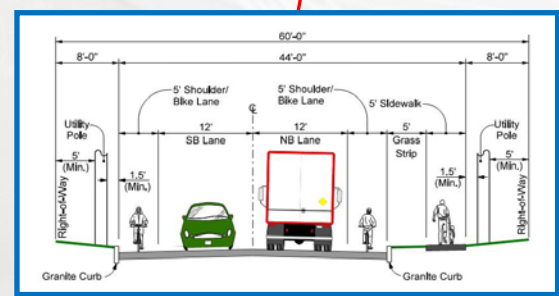
Alternatives Development – Typical Section



Willand Pond Road to Works Way

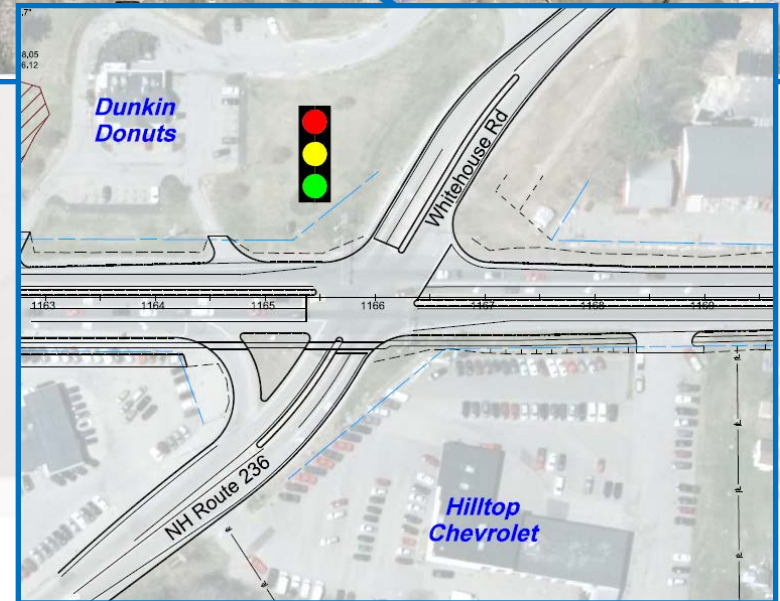
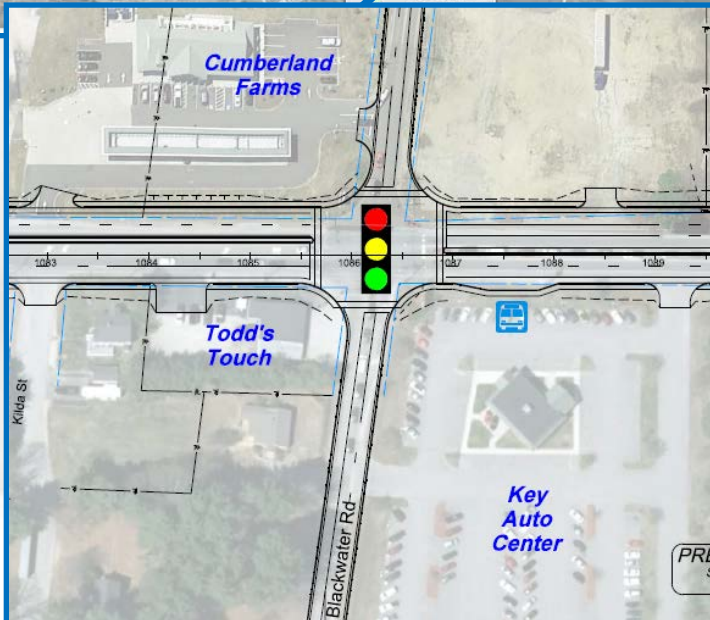
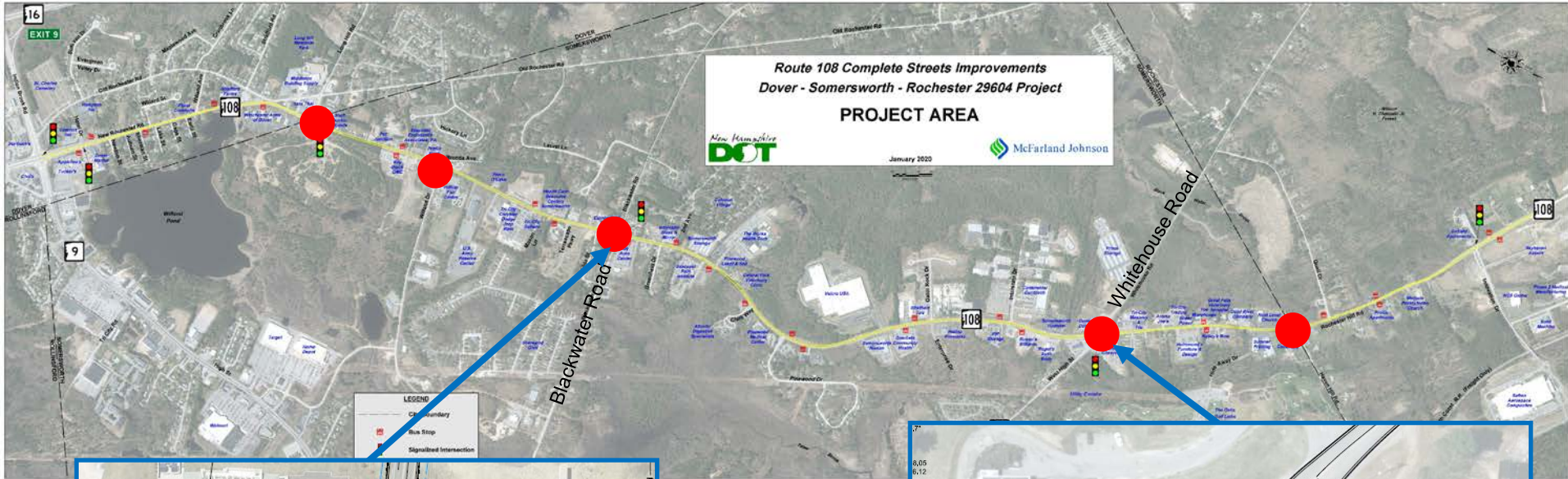


Works Way to Haven Hill Road



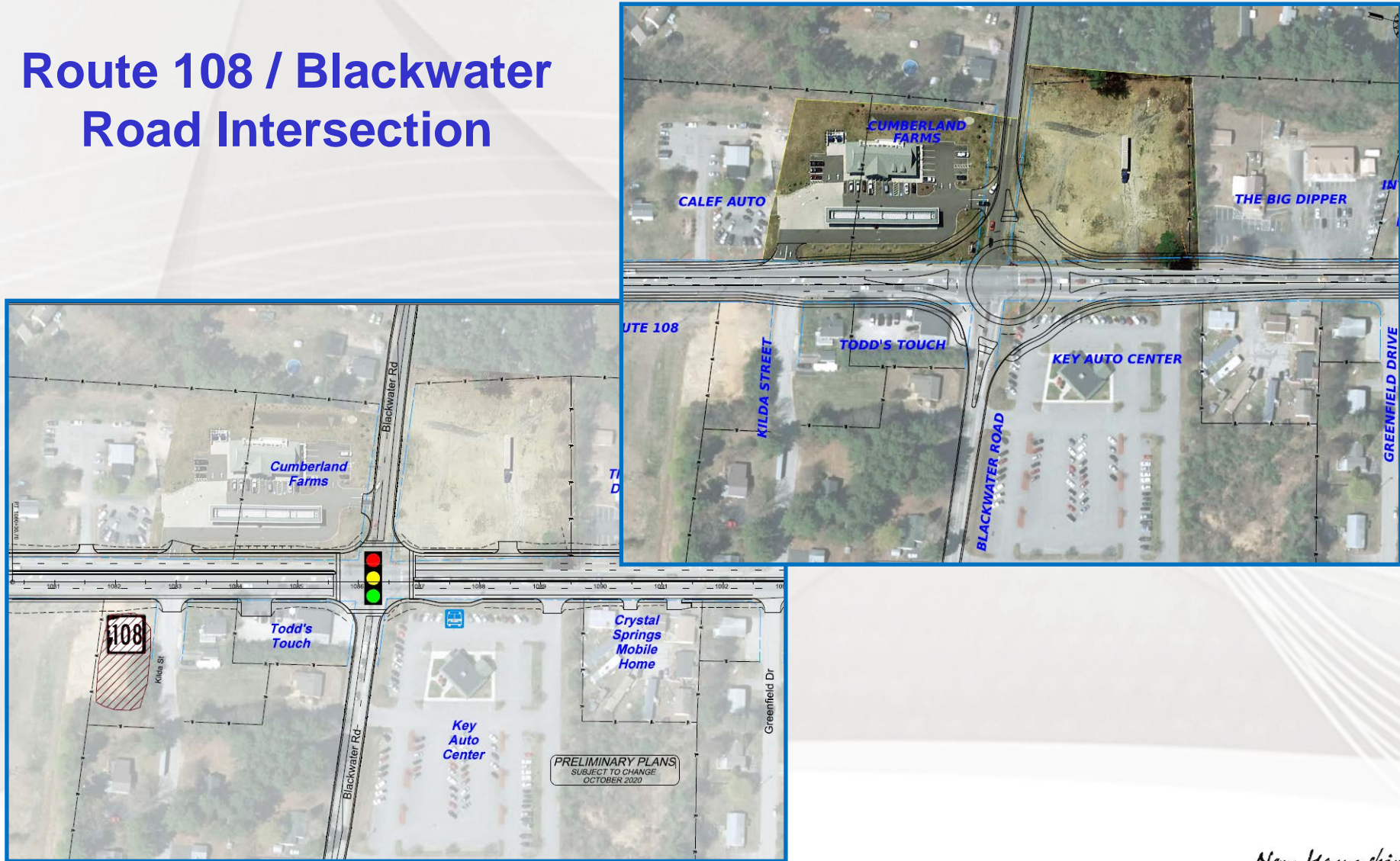
Haven Hill Road to Innovation Drive

Alternatives Development – Intersections



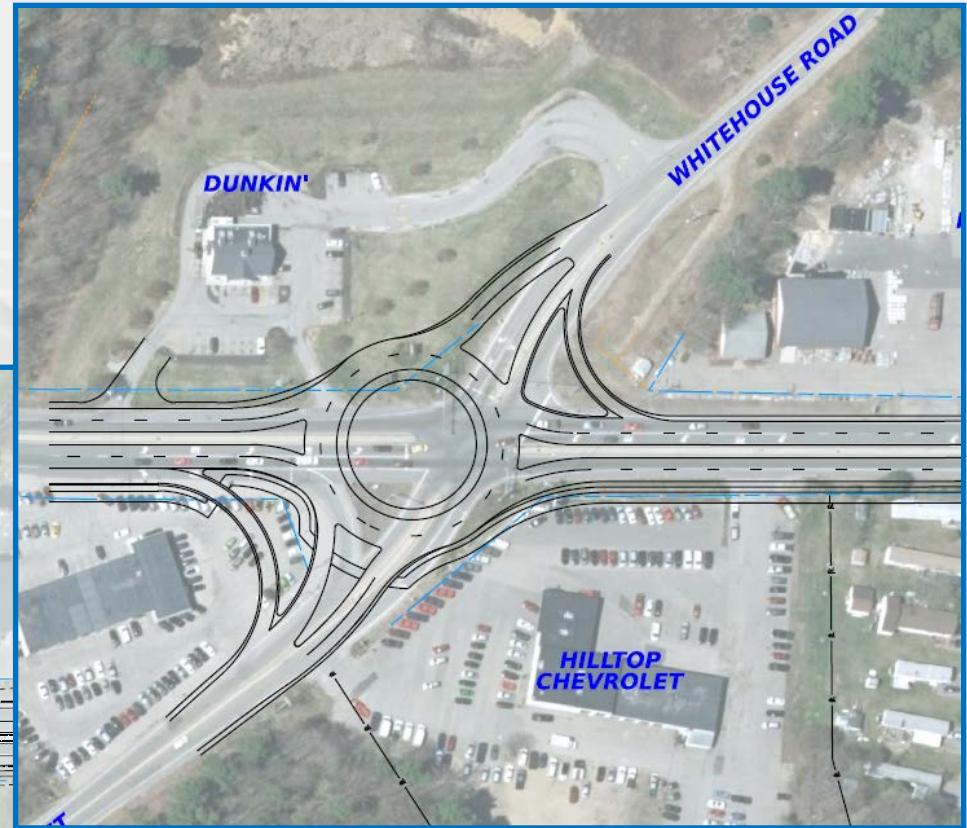
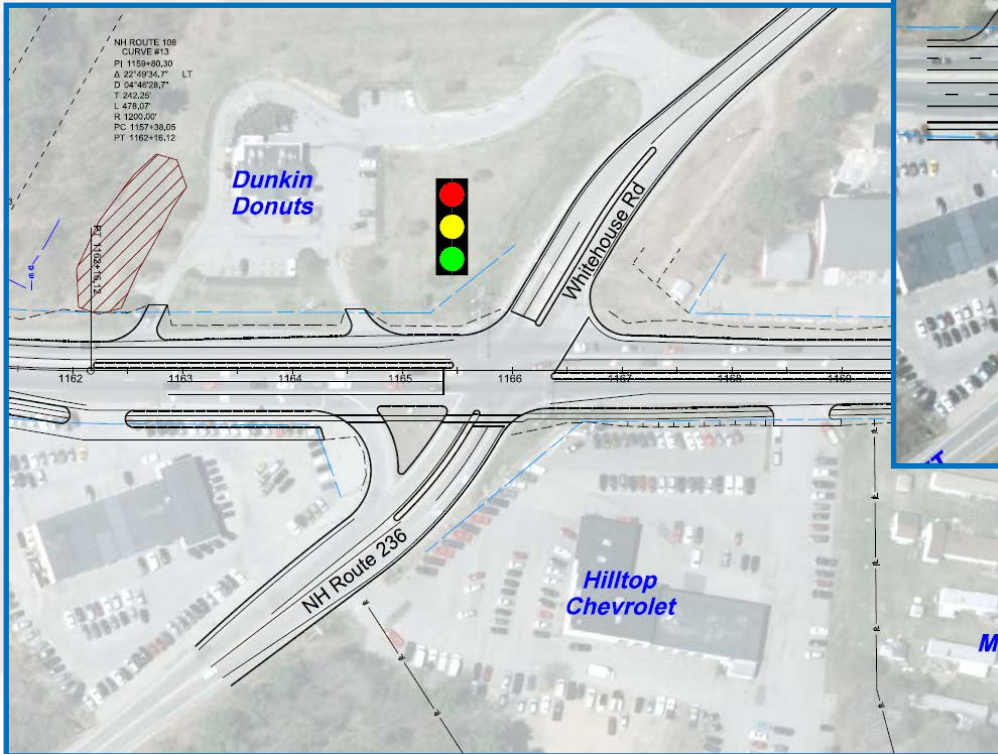
Alternatives Development

Route 108 / Blackwater Road Intersection

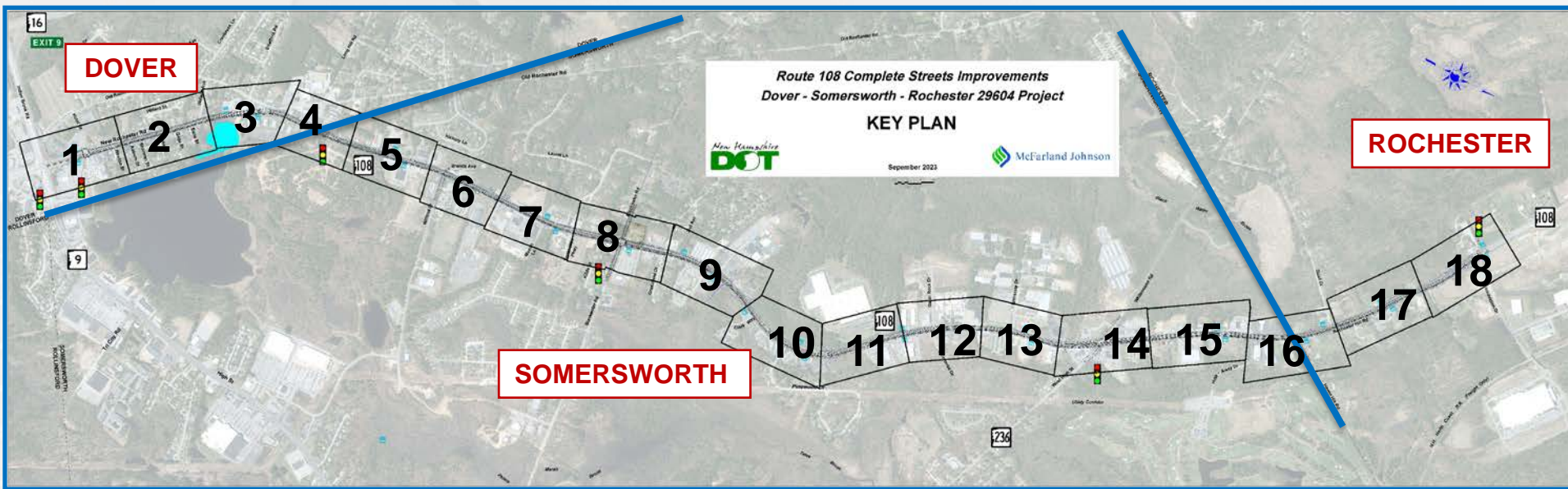


Alternatives Development

Route 108 / Whitehouse Road / Route 236 Intersection



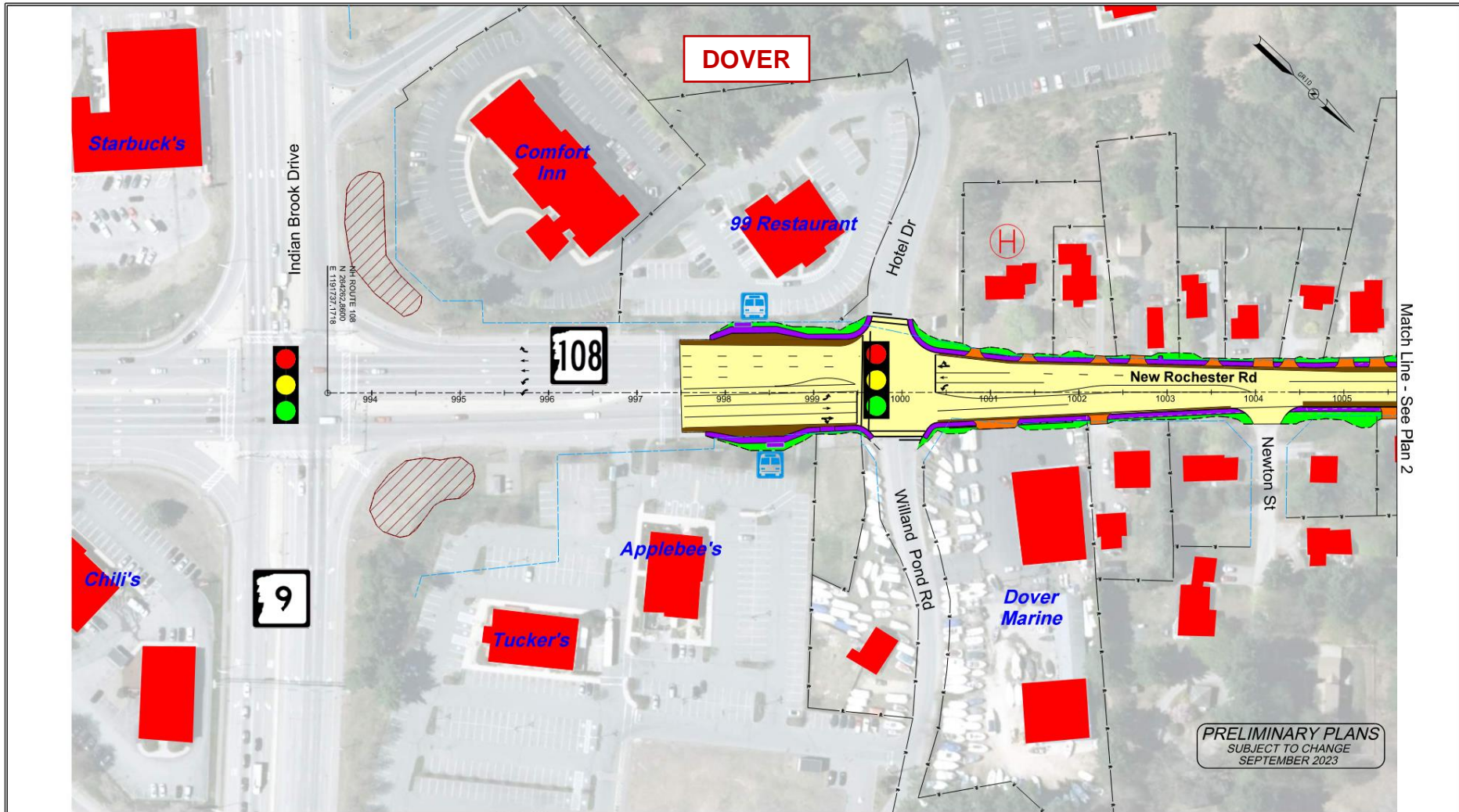
Proposed Improvements



Topics for Discussion

1. Turn Lanes
2. Sidewalks
3. Bus Stop Locations
4. Crosswalk Locations
5. Stormwater Treatment Sites (BMPs)

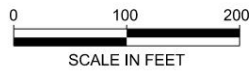
Proposed Improvements



PRELIMINARY PLANS
SUBJECT TO CHANGE
SEPTEMBER 2023

LEGEND

-  Bus Stop
-  Signalized Intersection
-  Historic Property
-  Fill Slope Limits
-  Cut Slope Limits
-  Parcel Boundaries
-  Existing Right-Of-Way
-  Wetlands
-  Potential Storm Water Treatment Site
-  Bus Shelter Accommodation



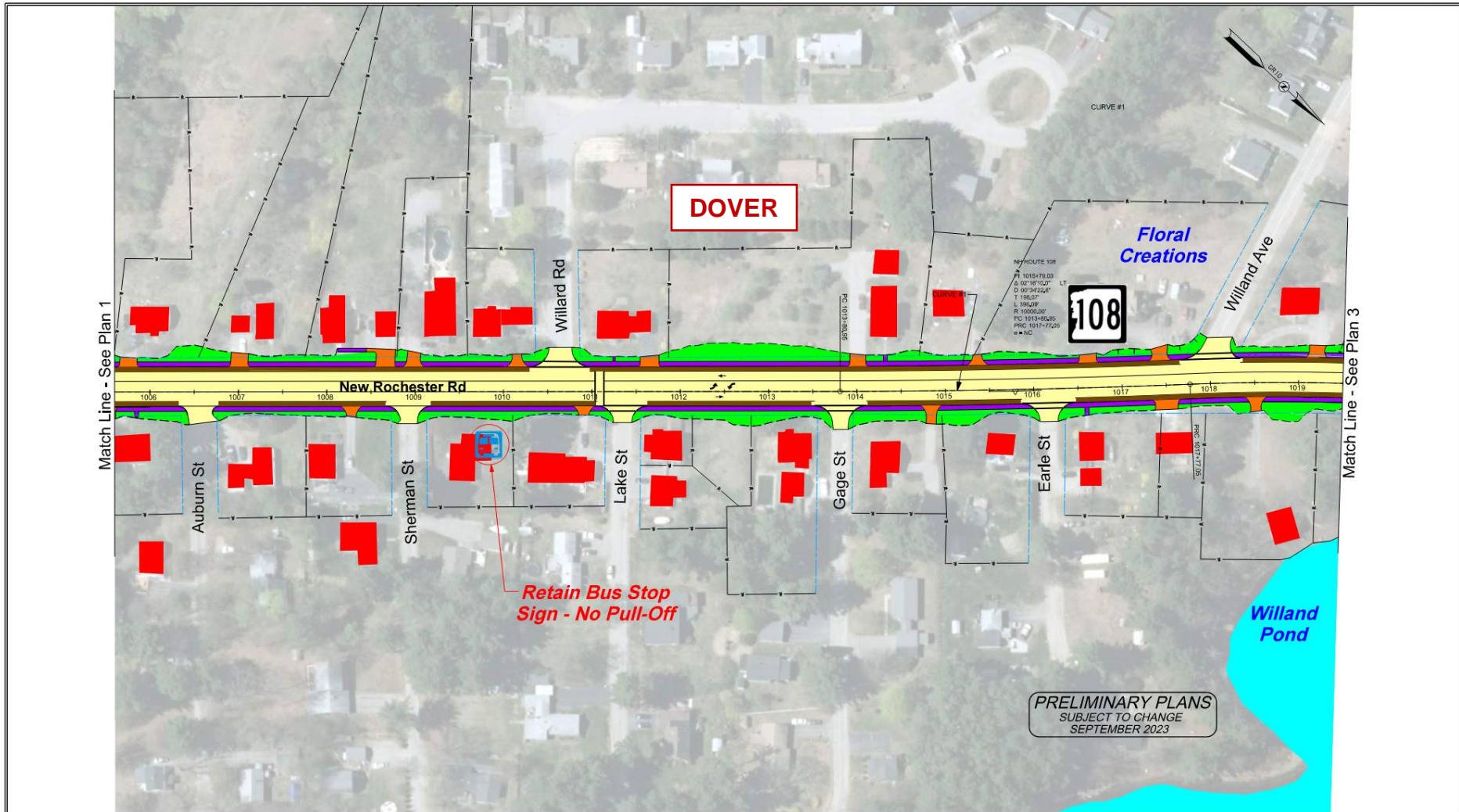
Route 108 Complete Streets
DOVER-SOMERSWORTH-ROCHESTER, 29604

PROPOSED IMPROVEMENTS
PLAN 1

SCALE: 1" = 20' DATE: SEPTEMBER 2023 FIGURE: 1

 McFarland Johnson

Proposed Improvements



- Bus Stop
- Signalized Intersection

Historic Property

LEGEND

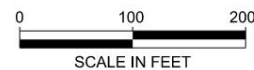
- Fill Slope Limits
- Cut Slope Limits
- Parcel Boundaries
- Existing Right-Of-Way



Wetlands



Potential Storm Water Treatment Site
Bus Shelter Accommodation

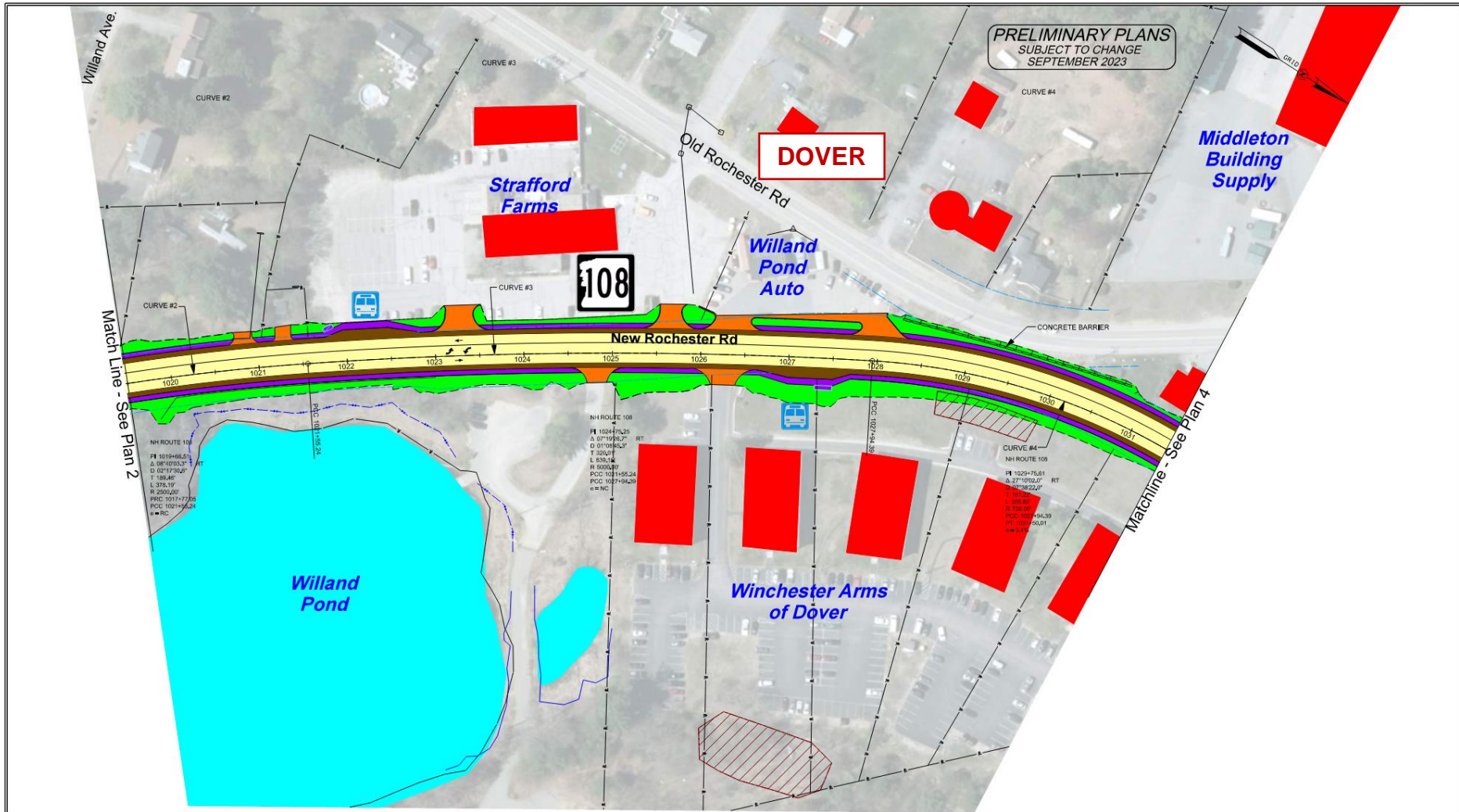


Route 108 Complete Streets
DOVER-SOMERSWORTH-ROCHESTER, 29604

PROPOSED IMPROVEMENTS
PLAN 2

SCALE: 1" = 21' DATE: SEPTEMBER 2023 FIGURE: 2
 McFarland Johnson

Proposed Improvements



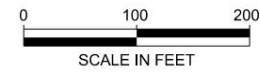
LEGEND

- Bus Stop
- Signalized Intersection

Historic Property

- Fill Slope Limits
- Cut Slope Limits
- Parcel Boundaries
- Existing Right-Of-Way

- Wetlands
- Potential Storm Water Treatment Site
- Bus Shelter Accommodation



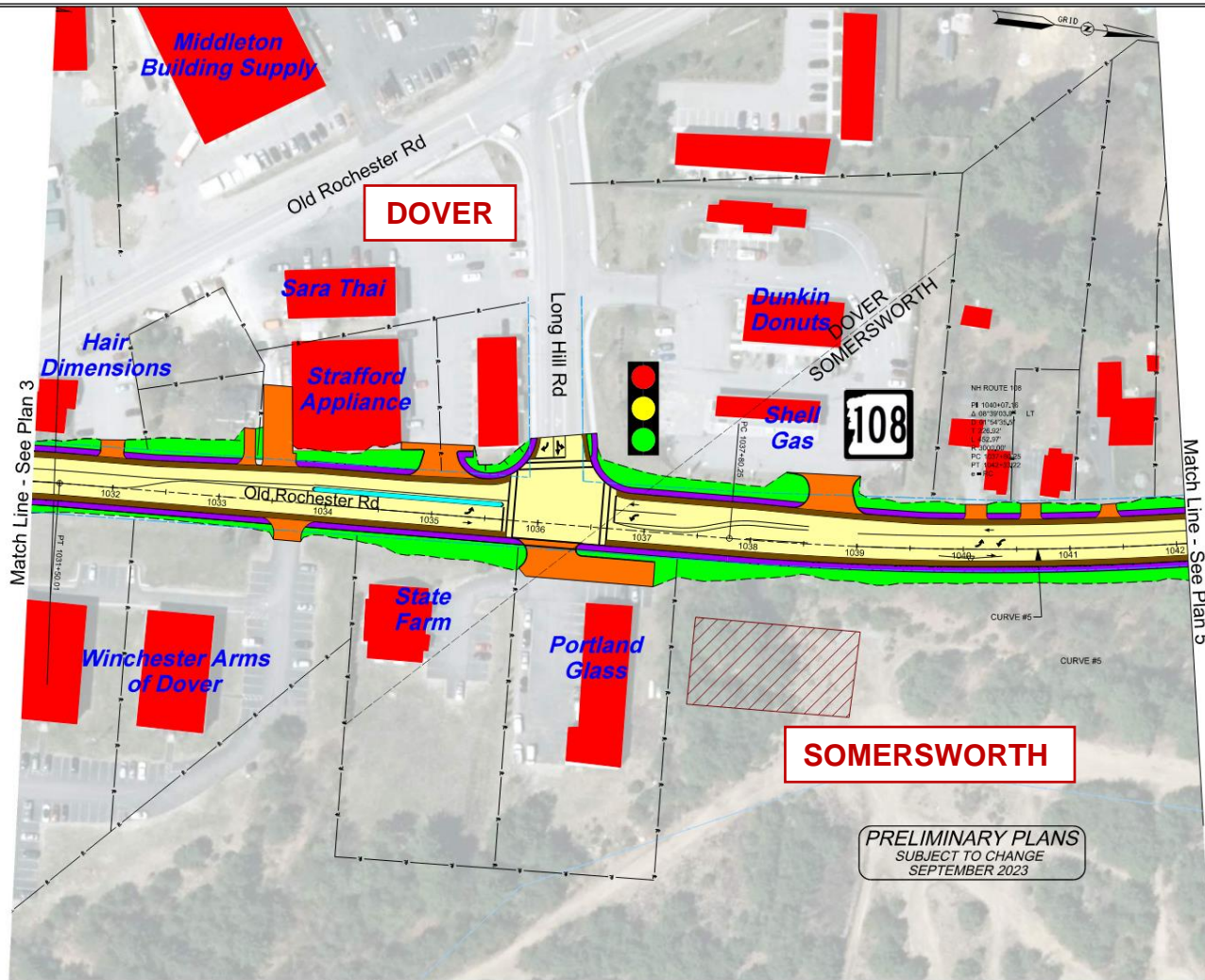
Route 108 Complete Streets
DOVER-SOMERSWORTH-ROCHESTER, 29604

PROPOSED IMPROVEMENTS
PLAN 3

SCALE: 1" = 22' DATE: SEPTEMBER 2023 FIGURE: 3

McFarland Johnson

Proposed Improvements



-  Bus Stop
-  Signalized Intersection

 Historic Property

LEGEND

-  Fill Slope Limits
-  Cut Slope Limits
-  Parcel Boundaries
-  Existing Right-Of-Way



Wetlands



Potential Storm Water Treatment Site
Bus Shelter Accommodation

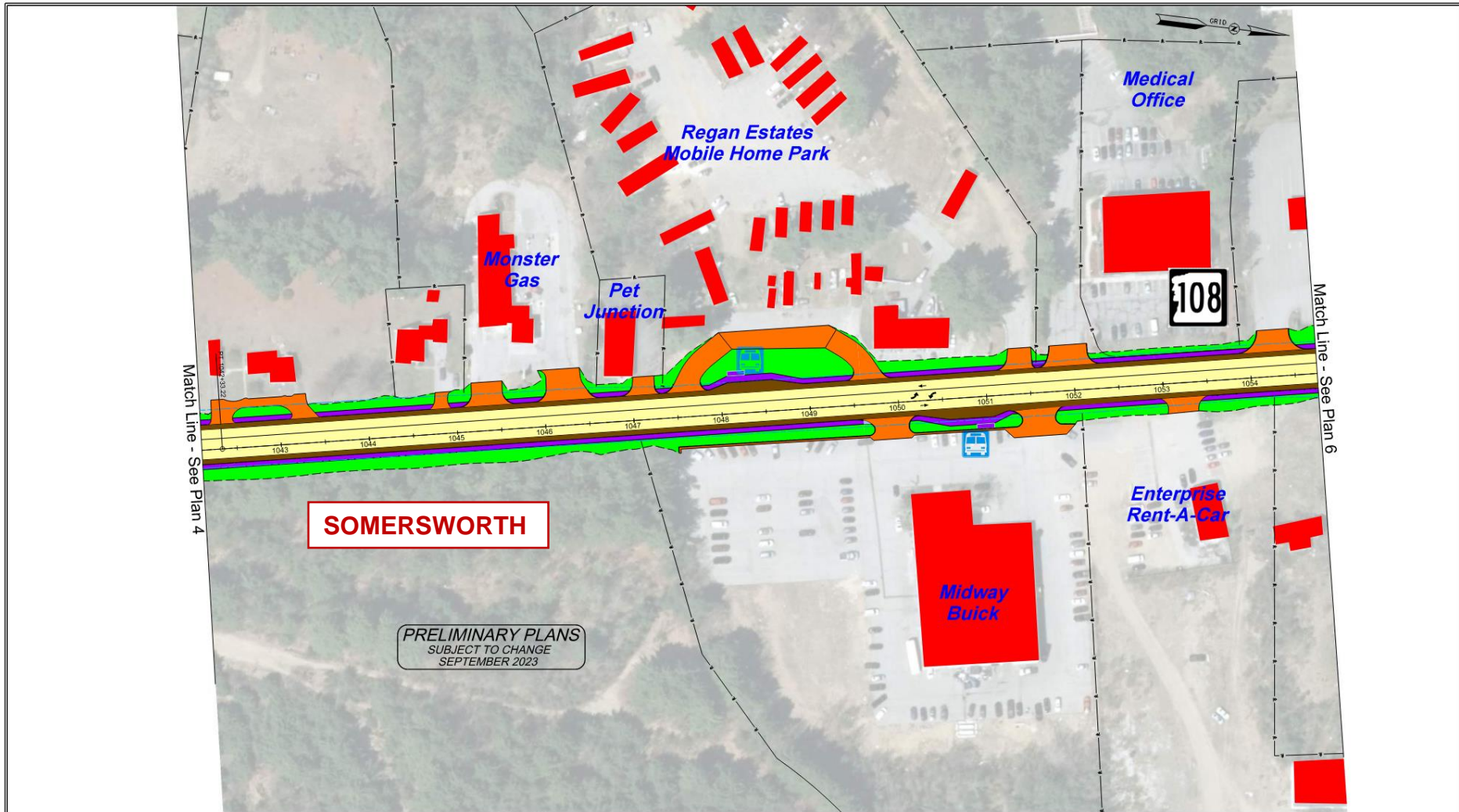


Route 108 Complete Streets
DOVER-SOMERSWORTH-ROCHESTER, 29604

PROPOSED IMPROVEMENTS
PLAN 4

SCALE: 1" = 23'	DATE: SEPTEMBER 2023	FIGURE: 4
		

Proposed Improvements



SOMERSWORTH

PRELIMINARY PLANS
SUBJECT TO CHANGE
SEPTEMBER 2023

LEGEND

- Bus Stop
- Signalized Intersection
- Historic Property

- Fill Slope Limits
- Cut Slope Limits
- Parcel Boundaries
- Existing Right-Of-Way

- Wetlands
- Potential Storm Water Treatment Site
- Bus Shelter Accommodation



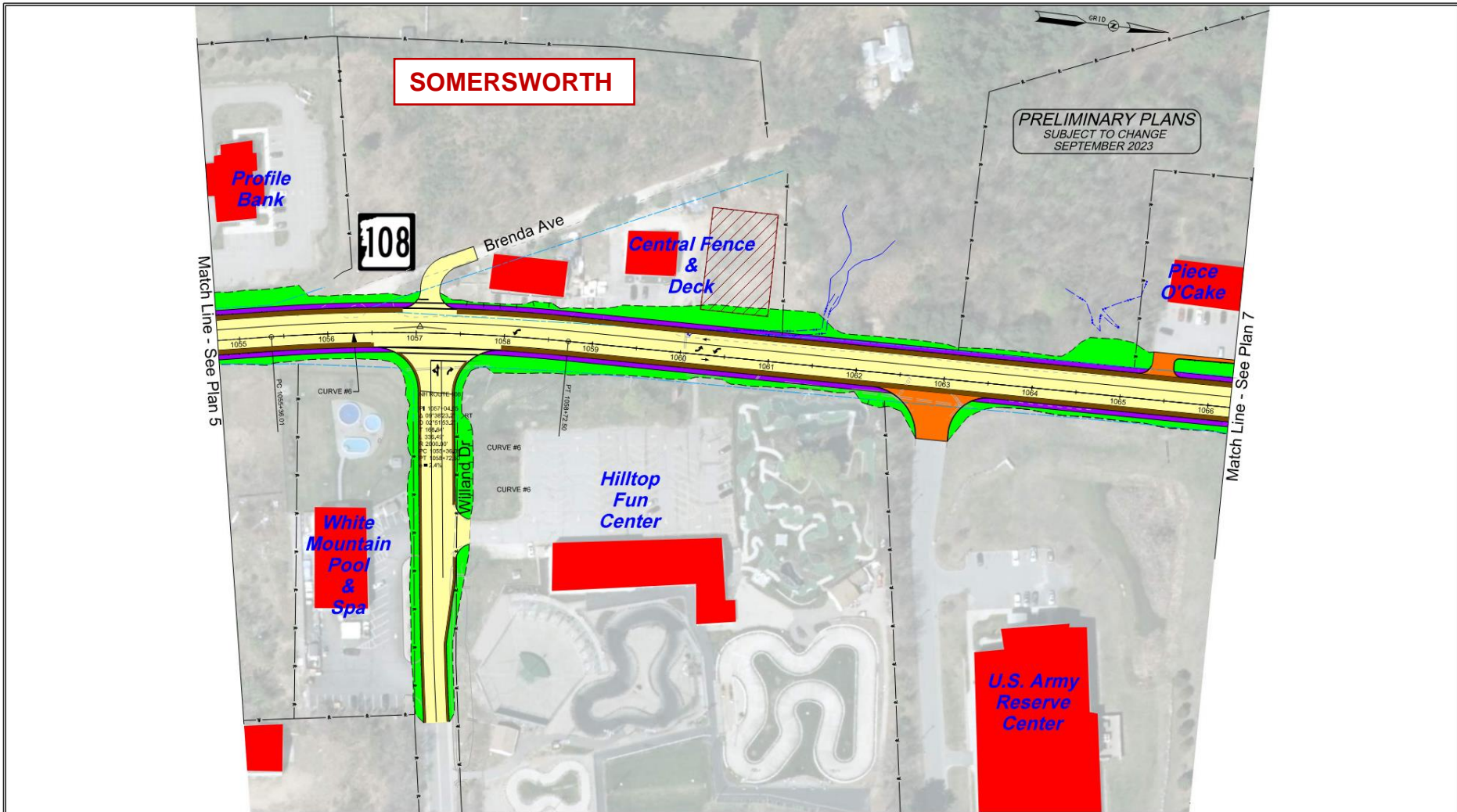
Route 108 Complete Streets
DOVER-SOMERSWORTH-ROCHESTER, 29604

PROPOSED IMPROVEMENTS
PLAN 5

SCALE: 1" = 24' DATE: SEPTEMBER 2023 FIGURE: 5

McFarland Johnson

Proposed Improvements



- Bus Stop
- Signalized Intersection

Historic Property

LEGEND

- Fill Slope Limits
- Cut Slope Limits
- Parcel Boundaries
- Existing Right-Of-Way



Wetlands



Potential Storm Water Treatment Site
Bus Shelter Accommodation



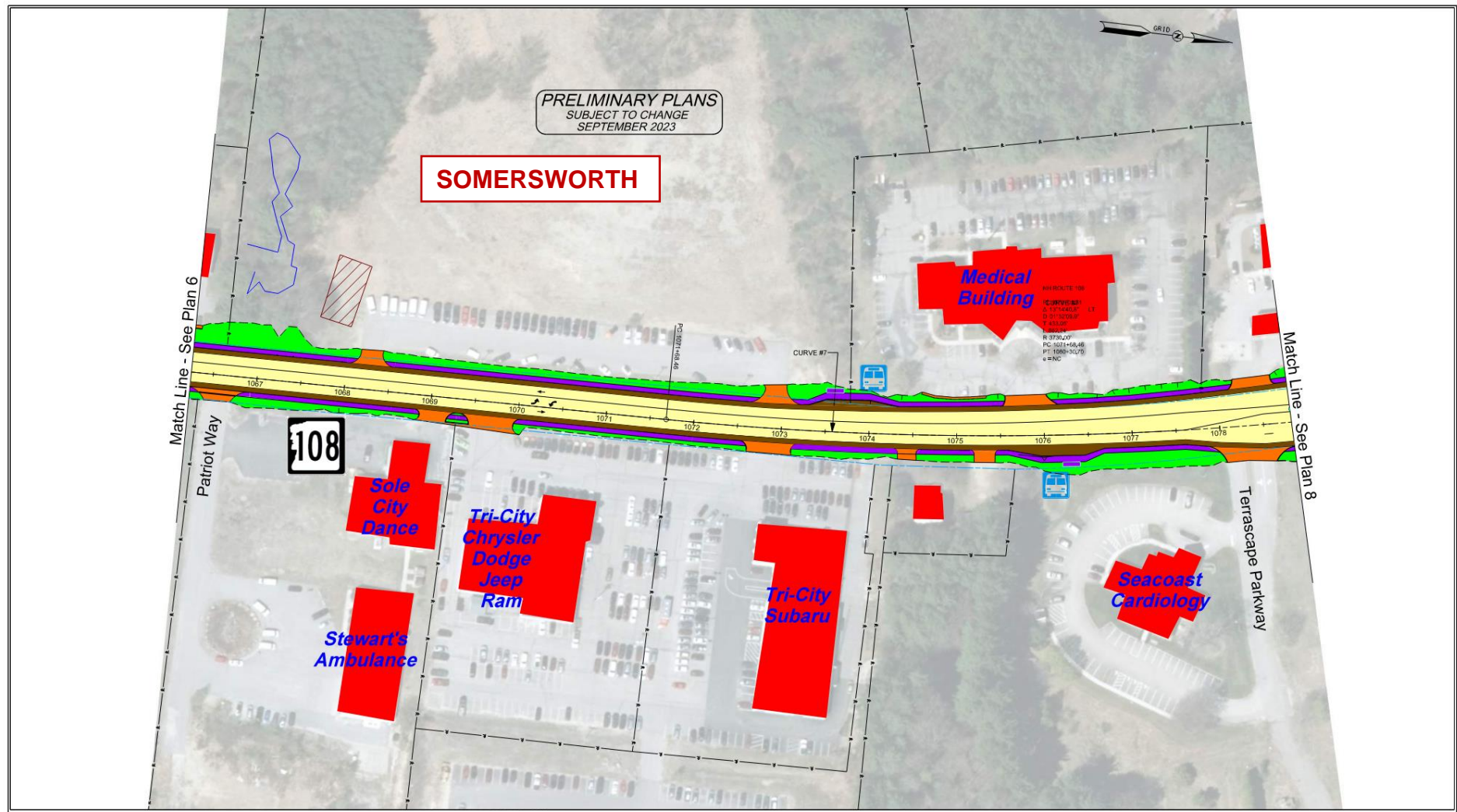
Route 108 Complete Streets
DOVER-SOMERSWORTH-ROCHESTER, 29604

PROPOSED IMPROVEMENTS
PLAN 6

SCALE: 1" = 25' DATE: SEPTEMBER 2023 FIGURE: 6

McFarland Johnson

Proposed Improvements



PRELIMINARY PLANS
SUBJECT TO CHANGE
SEPTEMBER 2023

SOMERSWORTH

Match Line - See Plan 6

Match Line - See Plan 8

108

- LEGEND**
- Fill Slope Limits
 - - - - - Cut Slope Limits
 - Parcel Boundaries
 - Existing Right-Of-Way

- Wetlands
- Potential Storm Water Treatment Site
- Bus Shelter Accommodation

Historic Property

- Bus Stop
- Signalized Intersection

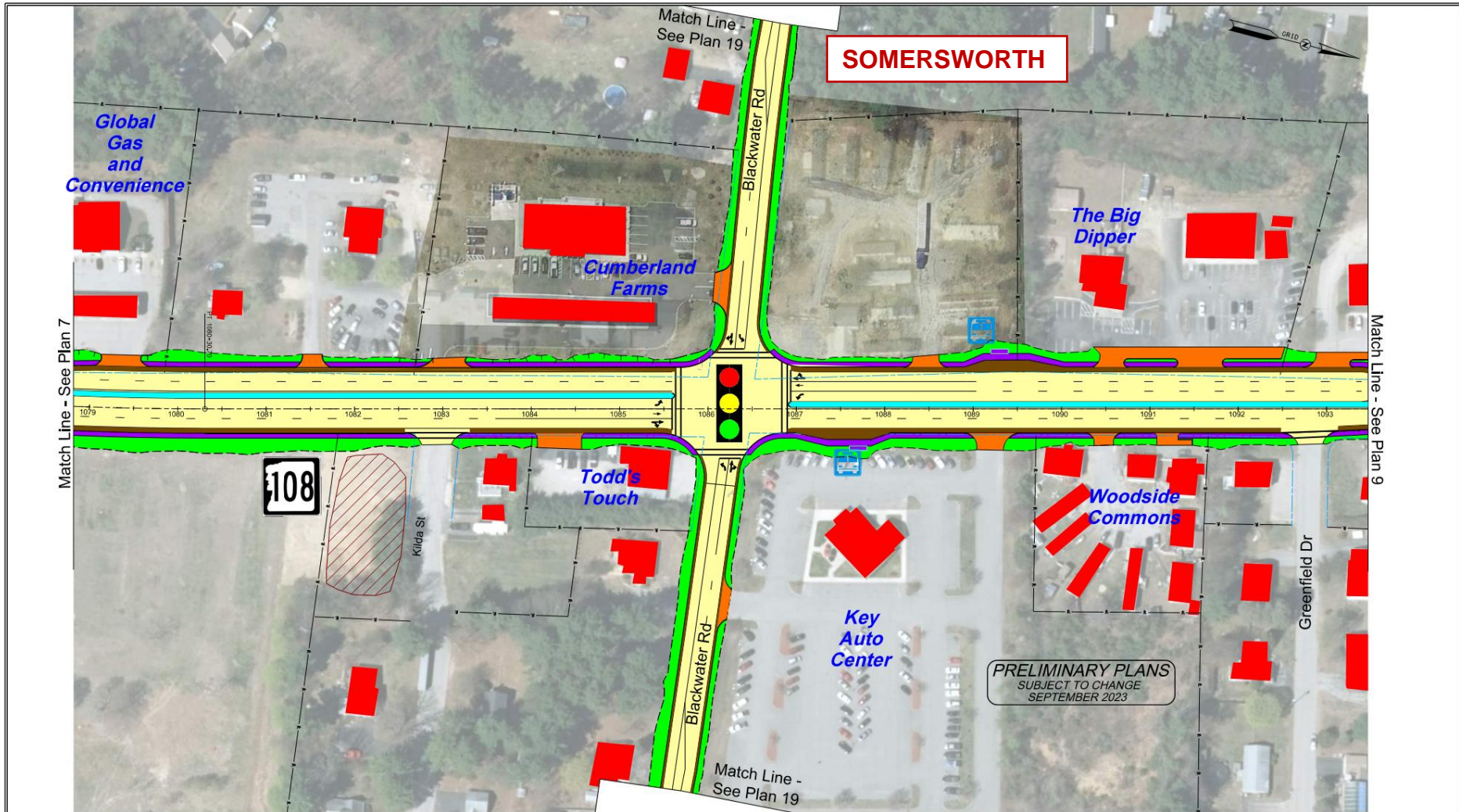


Route 108 Complete Streets
DOVER-SOMERSWORTH-ROCHESTER, 29604

PROPOSED IMPROVEMENTS
PLAN 7

SCALE: 1" = 50' DATE: SEPTEMBER 2023 FIGURE: 7

Proposed Improvements



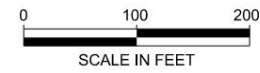
PRELIMINARY PLANS
SUBJECT TO CHANGE
SEPTEMBER 2023

LEGEND

- Bus Stop
- Signalized Intersection
- Historic Property

- Fill Slope Limits
- Cut Slope Limits
- Parcel Boundaries
- Existing Right-Of-Way

- Wetlands
- Potential Storm Water Treatment Site
- Bus Shelter Accommodation



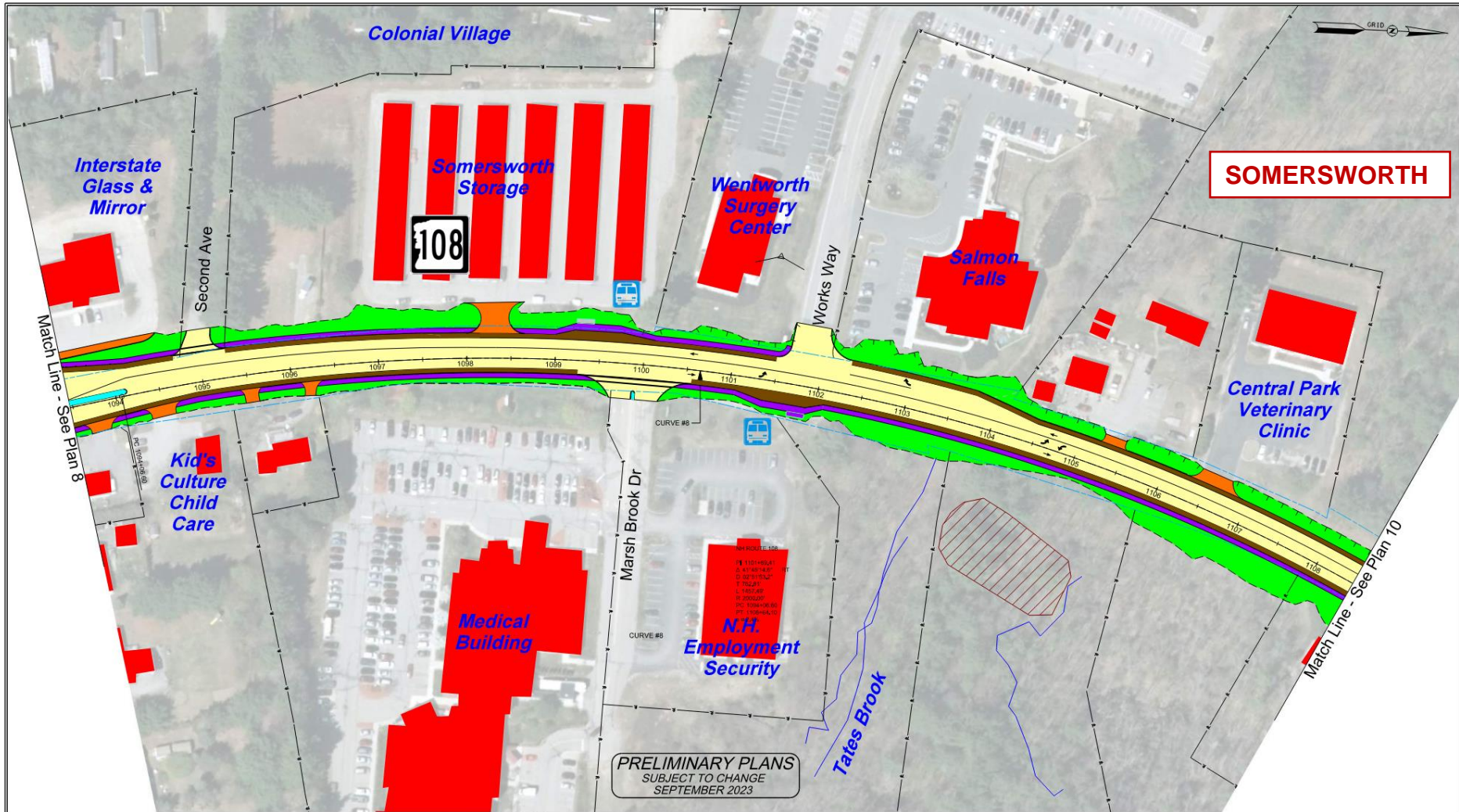
Route 108 Complete Streets
DOVER-SOMERSWORTH-ROCHESTER, 29604

PROPOSED IMPROVEMENTS
PLAN 8

SCALE: 1" = 27' DATE: SEPTEMBER 2023 FIGURE: 8

McFarland Johnson

Proposed Improvements



PRELIMINARY PLANS
SUBJECT TO CHANGE
SEPTEMBER 2023

LEGEND

-  Bus Stop
-  Signalized Intersection
-  Historic Property

-  Fill Slope Limits
-  Cut Slope Limits
-  Parcel Boundaries
-  Existing Right-Of-Way

-  Wetlands
-  Potential Storm Water Treatment Site
-  Bus Shelter Accommodation



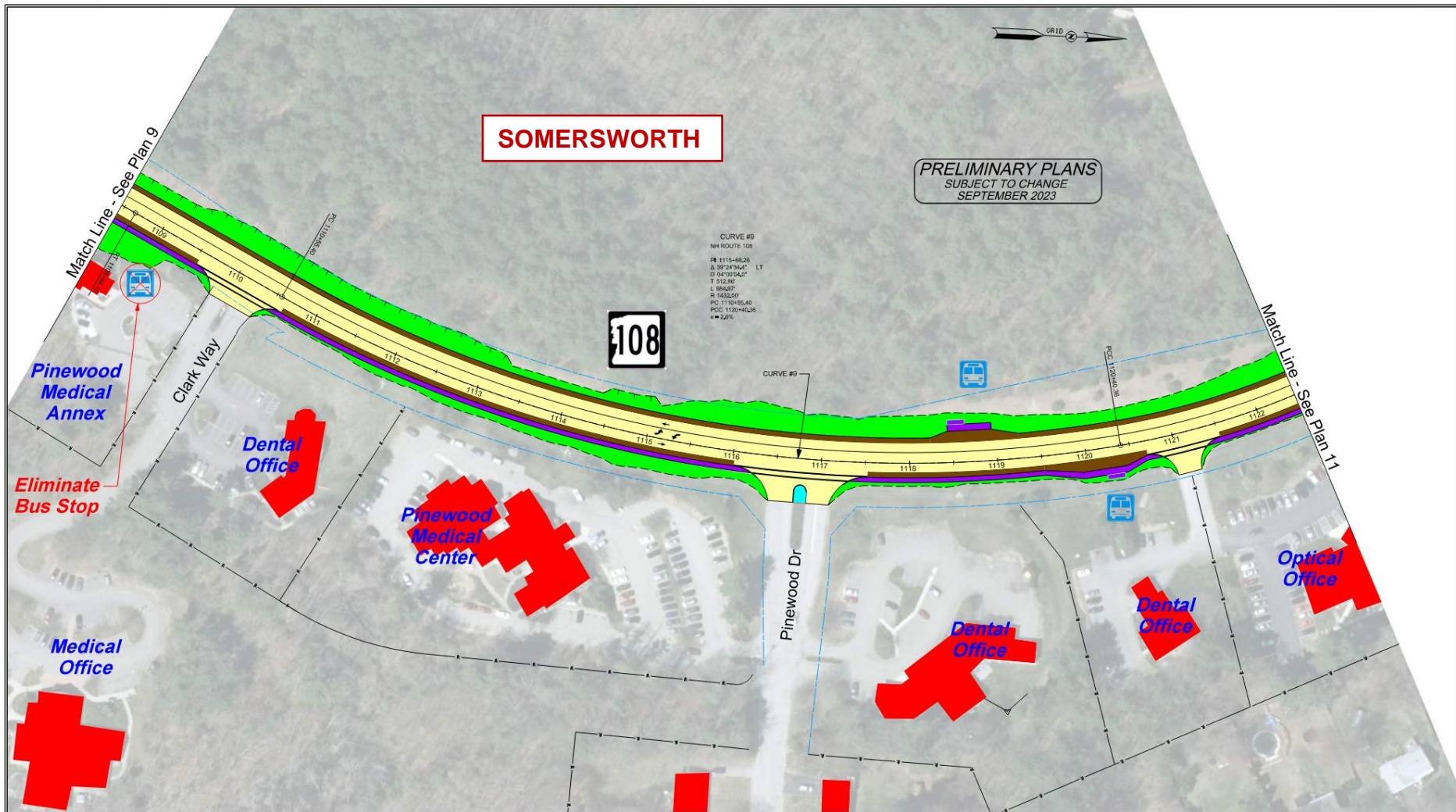
Route 108 Complete Streets
DOVER-SOMERSWORTH-ROCHESTER, 29604

PROPOSED IMPROVEMENTS
PLAN 9

SCALE: 1" = 28' DATE: SEPTEMBER 2023 FIGURE: 9

 McFarland Johnson

Proposed Improvements



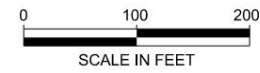
LEGEND

- Bus Stop
- Signalized Intersection

Historic Property

- Fill Slope Limits
- Cut Slope Limits
- Parcel Boundaries
- Existing Right-Of-Way

- Wetlands
- Potential Storm Water Treatment Site
- Bus Shelter Accommodation



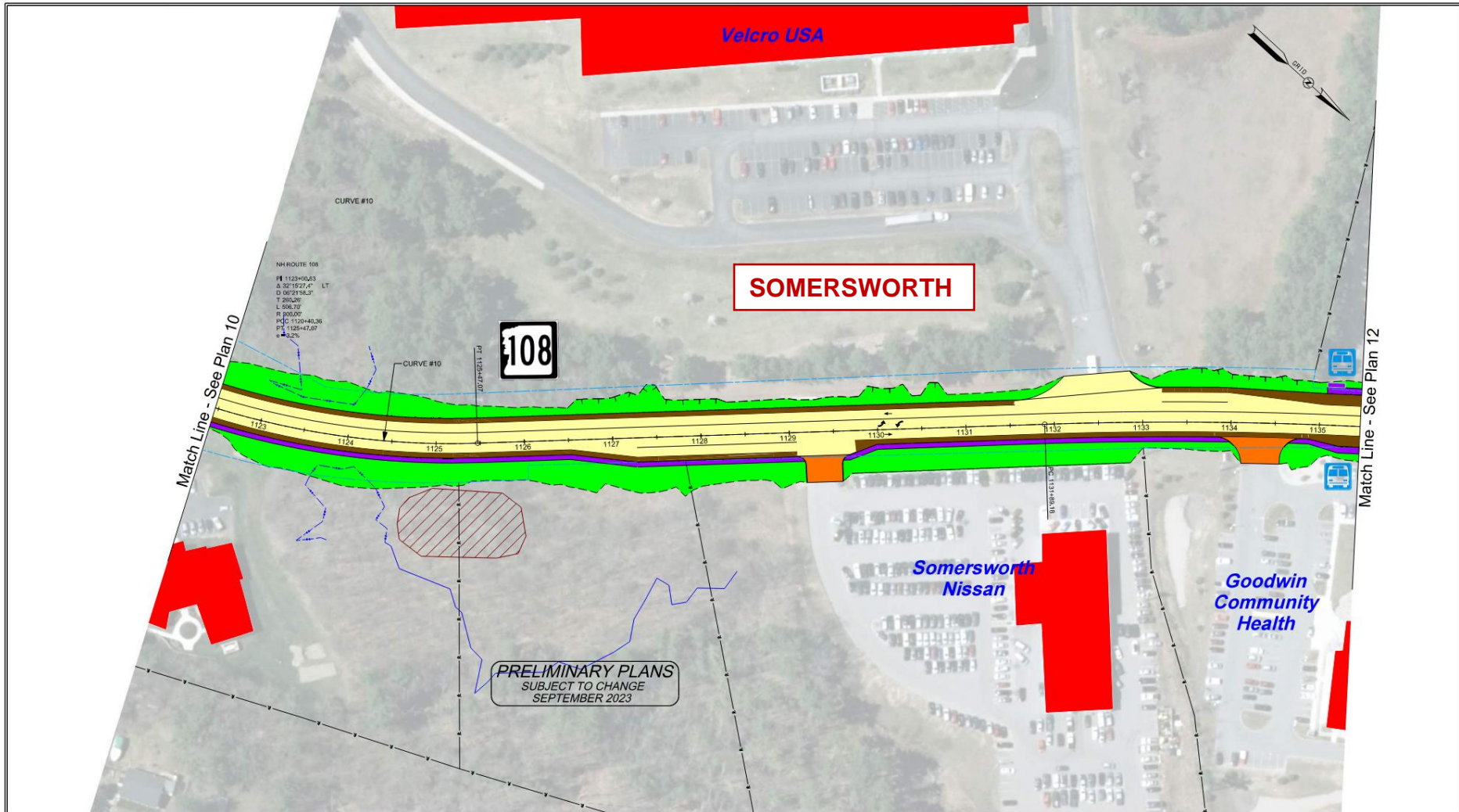
Route 108 Complete Streets
DOVER-SOMERSWORTH-ROCHESTER, 29604

PROPOSED IMPROVEMENTS
PLAN 10

SCALE: 1" = 29' DATE: SEPTEMBER 2023 FIGURE: 10

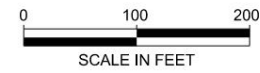
29
McFarland Johnson

Proposed Improvements



- LEGEND**
- FIII Slope Limits
 - - - - Cut Slope Limits
 - Parcel Boundaries
 - Existing Right-Of-Way

- Wetlands
- Potential Storm Water Treatment Site
- Bus Shelter Accommodation



- Bus Stop
- Signalized Intersection
- Historic Property

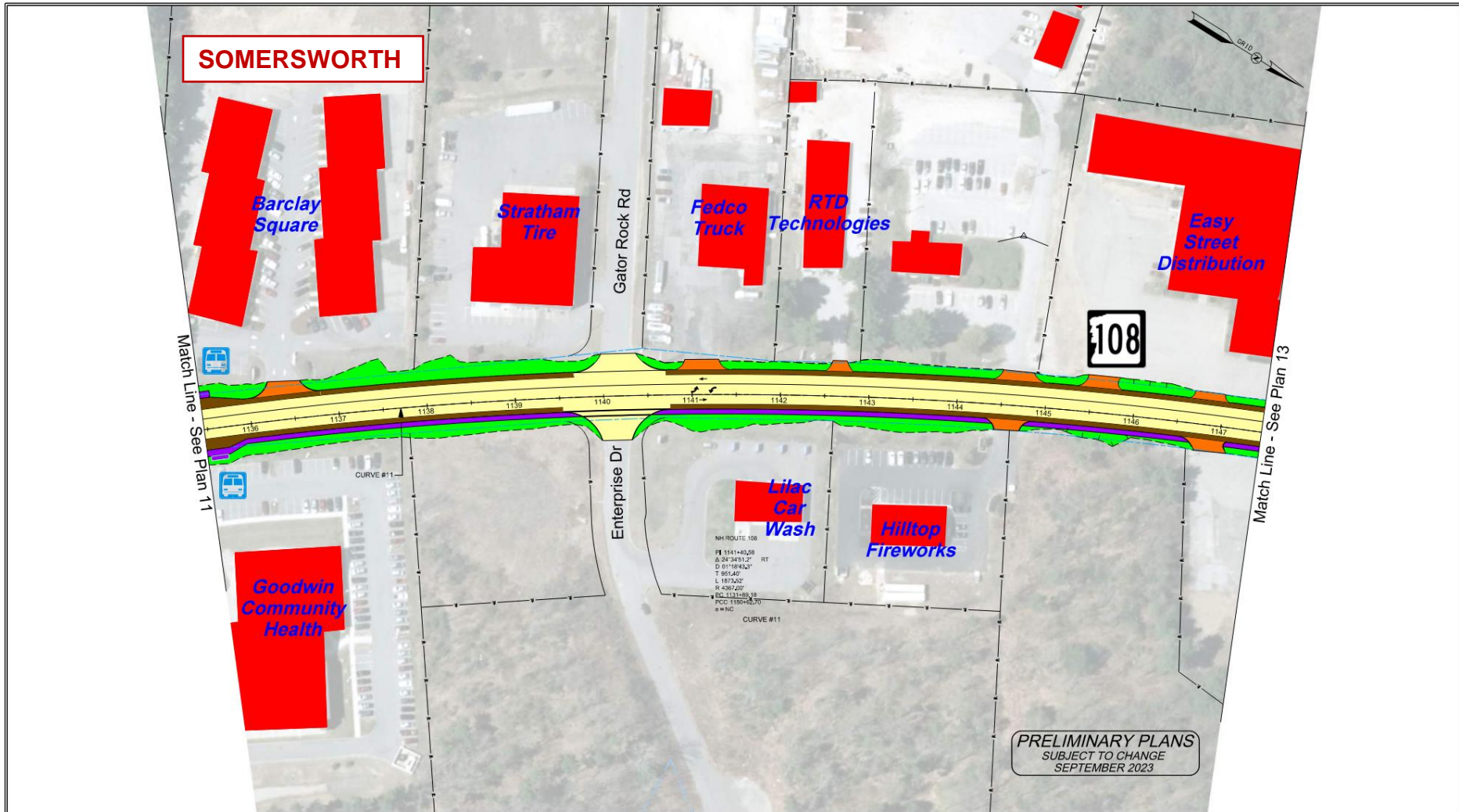
Route 108 Complete Streets
DOVER-SOMERSWORTH-ROCHESTER, 29604

PROPOSED IMPROVEMENTS
PLAN 11

SCALE: 1" = 30' DATE: SEPTEMBER 2023 FIGURE: 11

McFarland Johnson

Proposed Improvements



PRELIMINARY PLANS
 SUBJECT TO CHANGE
 SEPTEMBER 2023

- Bus Stop
- Signalized Intersection
- Historic Property

- LEGEND**
- Fill Slope Limits
 - Cut Slope Limits
 - Parcel Boundaries
 - Existing Right-Of-Way

- Wetlands
- Potential Storm Water Treatment Site
- Bus Shelter Accommodation



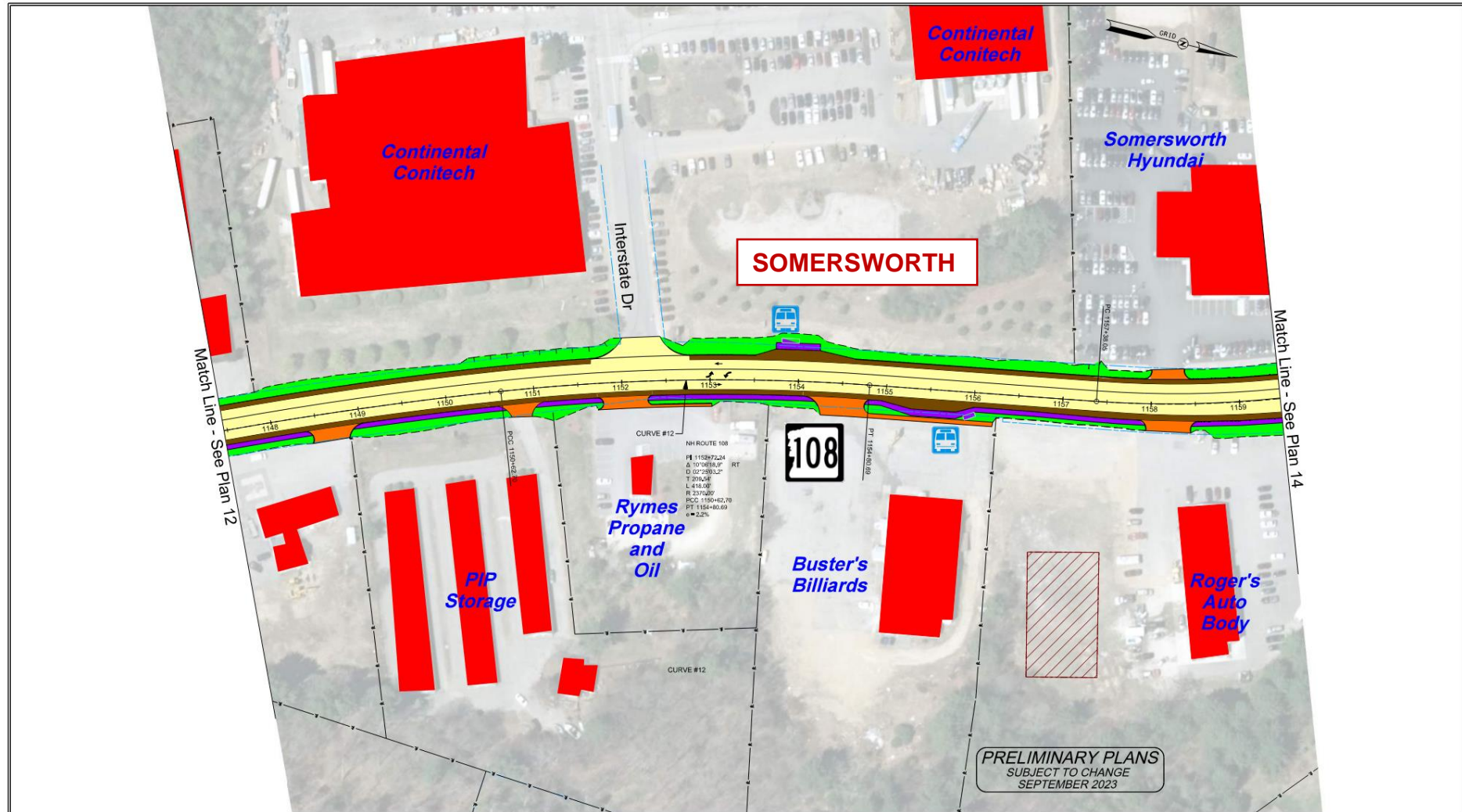
Route 108 Complete Streets
 DOVER-SOMERSWORTH-ROCHESTER, 29604

PROPOSED IMPROVEMENTS
 PLAN 12

SCALE: 1" = 31' DATE: SEPTEMBER 2023 FIGURE: 12

McFarland Johnson

Proposed Improvements



PRELIMINARY PLANS
SUBJECT TO CHANGE
SEPTEMBER 2023

LEGEND

- Bus Stop
- Signalized Intersection
- Historic Property

- Fill Slope Limits
- Cut Slope Limits
- Parcel Boundaries
- Existing Right-Of-Way

- Wetlands
- Potential Storm Water Treatment Site
- Bus Shelter Accommodation



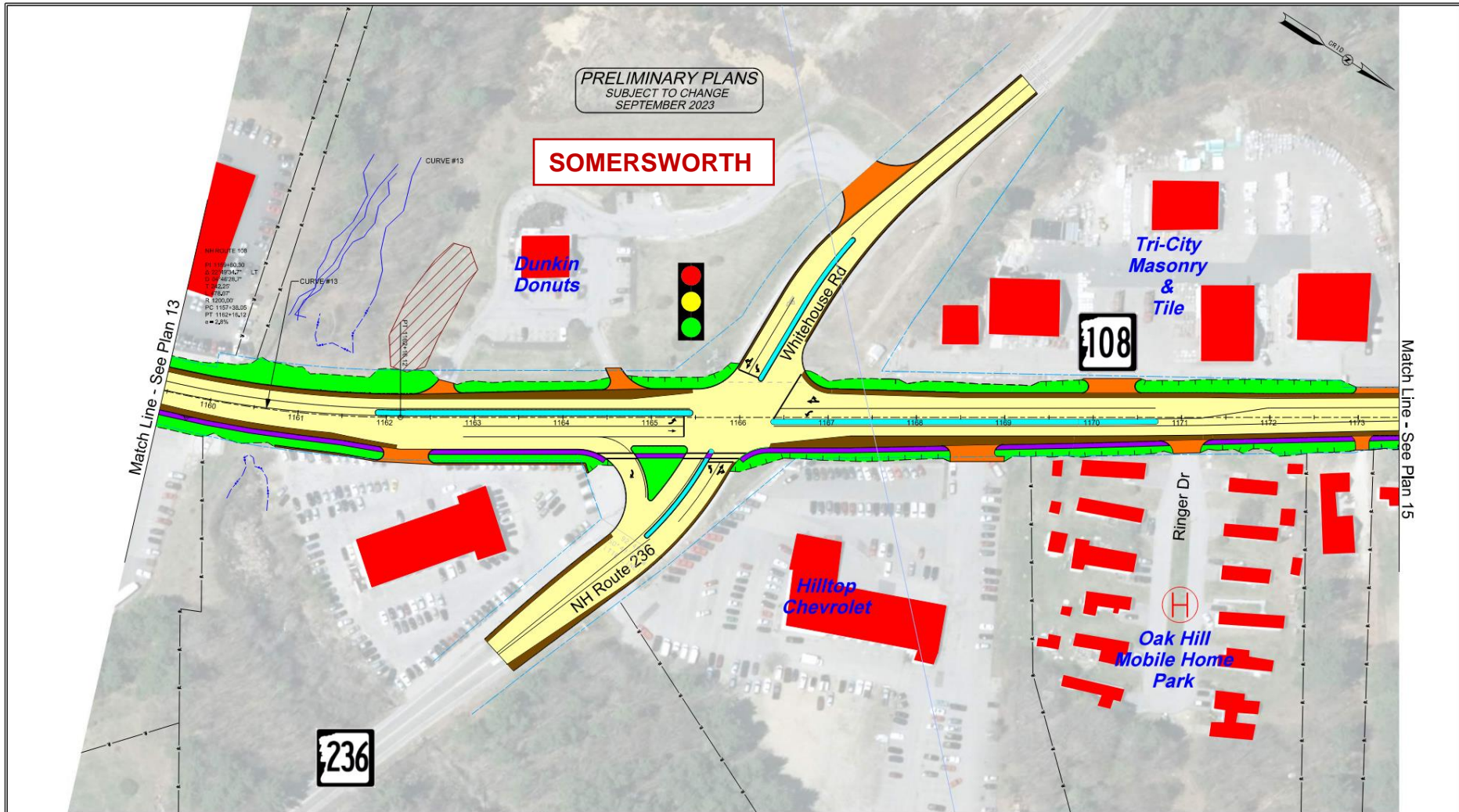
Route 108 Complete Streets
DOVER-SOMERSWORTH-ROCHESTER, 29604

PROPOSED IMPROVEMENTS
PLAN 13

SCALE: 1" = 32' DATE: SEPTEMBER 2023 FIGURE: 13

32 McFarland Johnson

Proposed Improvements



PRELIMINARY PLANS
SUBJECT TO CHANGE
SEPTEMBER 2023

SOMERSWORTH

Dunkin Donuts

Tri-City Masonry & Tile

Hilltop Chevrolet

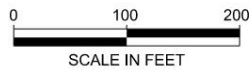
Oak Hill Mobile Home Park

LEGEND

- Bus Stop
- Signalized Intersection
- Historic Property

- Fill Slope Limits
- Cut Slope Limits
- Parcel Boundaries
- Existing Right-Of-Way

- Wetlands
- Potential Storm Water Treatment Site
- Bus Shelter Accommodation



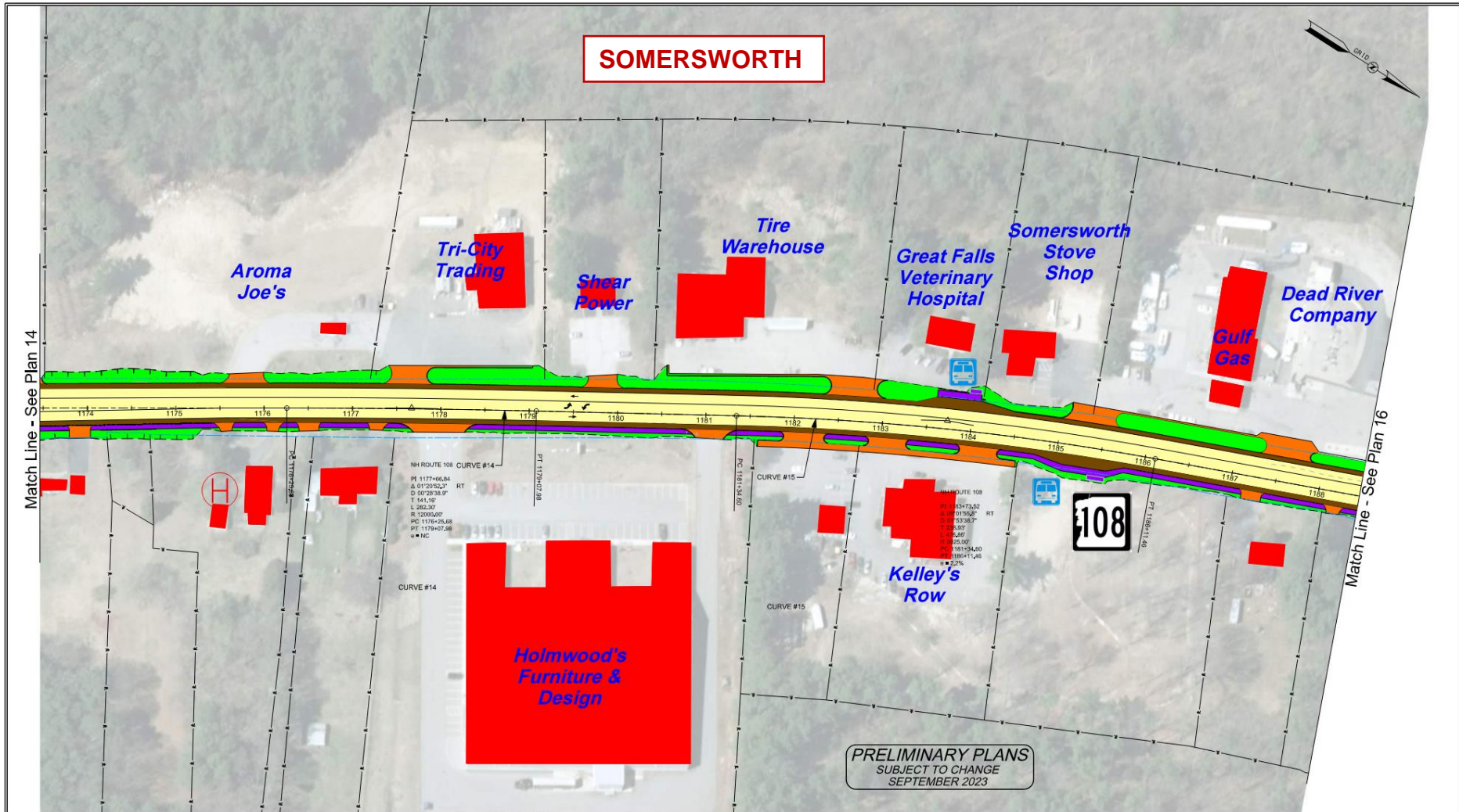
Route 108 Complete Streets
DOVER-SOMERSWORTH-ROCHESTER, 29604

PROPOSED IMPROVEMENTS
PLAN 14

SCALE: 1" = 33' DATE: SEPTEMBER 2023 FIGURE: 14

McFarland Johnson

Proposed Improvements



Match Line - See Plan 14

Match Line - See Plan 16

SOMERSWORTH

NH ROUTE 108 CURVE #14
 PI 1177+66.54
 Δ 01°20'52.1" RT
 D 50°28'38.9"
 T 144.18
 L 282.37
 RI 1200/507
 PC 1178+29.68
 PT 1179+07.98
 * = NC

CURVE #14

NH ROUTE 108 CURVE #15
 PI 1183+73.52
 Δ 01°10'58" RT
 D 53°38.7"
 T 288.50
 L 576.99
 RI 151/54/20
 PC 1184+11.46
 PT 1185+20.5

CURVE #15

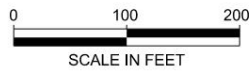
PRELIMINARY PLANS
 SUBJECT TO CHANGE
 SEPTEMBER 2023

- Bus Stop
- Signalized Intersection

Historic Property

- LEGEND**
- Fill Slope Limits
 - Cut Slope Limits
 - Parcel Boundaries
 - Existing Right-Of-Way

- Wetlands
- Potential Storm Water Treatment Site
- Bus Shelter Accommodation



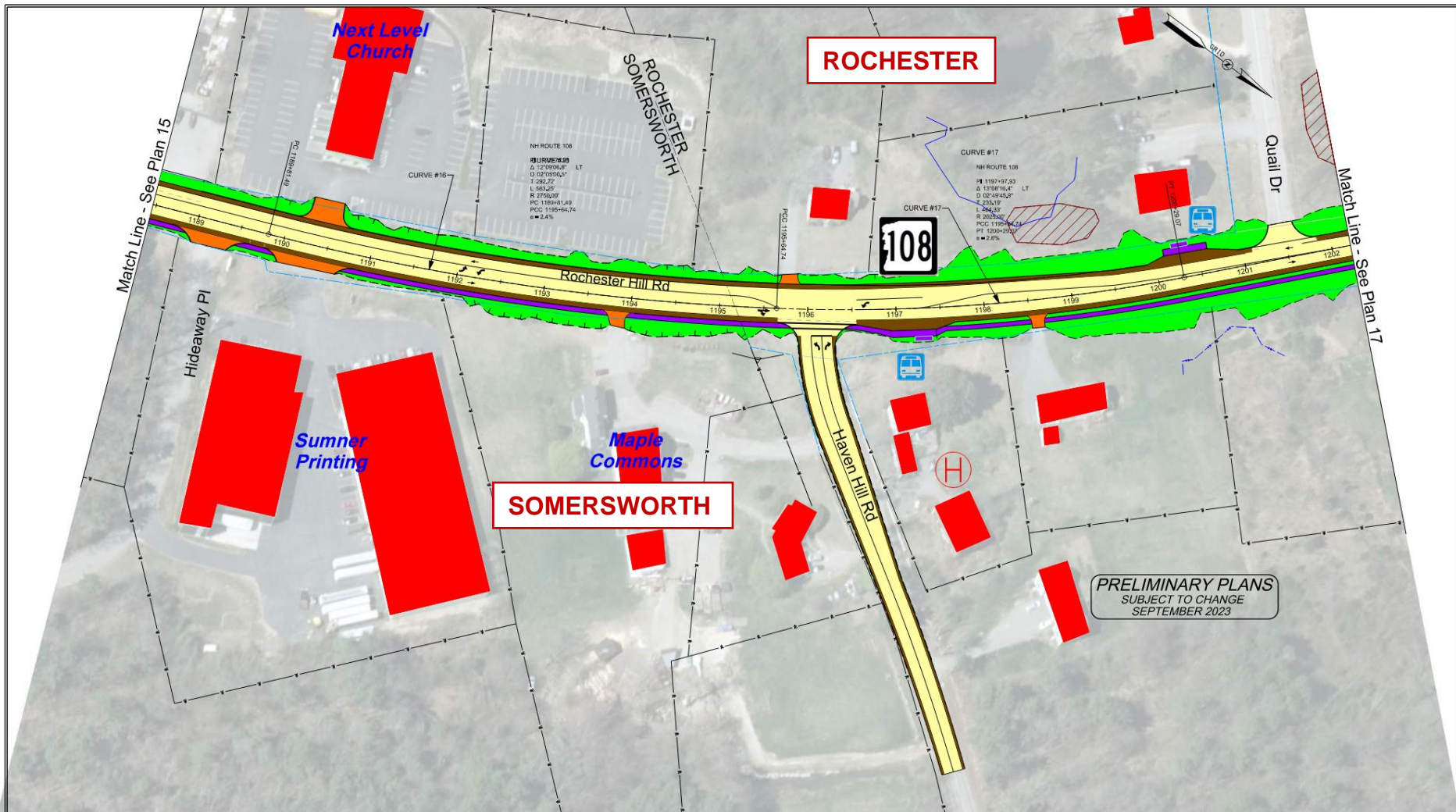
Route 108 Complete Streets
 DOVER-SOMERSWORTH-ROCHESTER, 29604

PROPOSED IMPROVEMENTS
 PLAN 15

SCALE: 1" = 34' DATE: SEPTEMBER 2023 FIGURE: 15

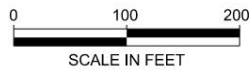
34 McFarland Johnson

Proposed Improvements



- LEGEND**
- Fill Slope Limits
 - - - Cut Slope Limits
 - Parcel Boundaries
 - Existing Right-Of-Way

- Wetlands
- Potential Storm Water Treatment Site
- Bus Shelter Accommodation



- Bus Stop
- Signalized Intersection
- Historic Property

**Route 108 Complete Streets
DOVER-SOMERSWORTH-ROCHESTER, 29604**

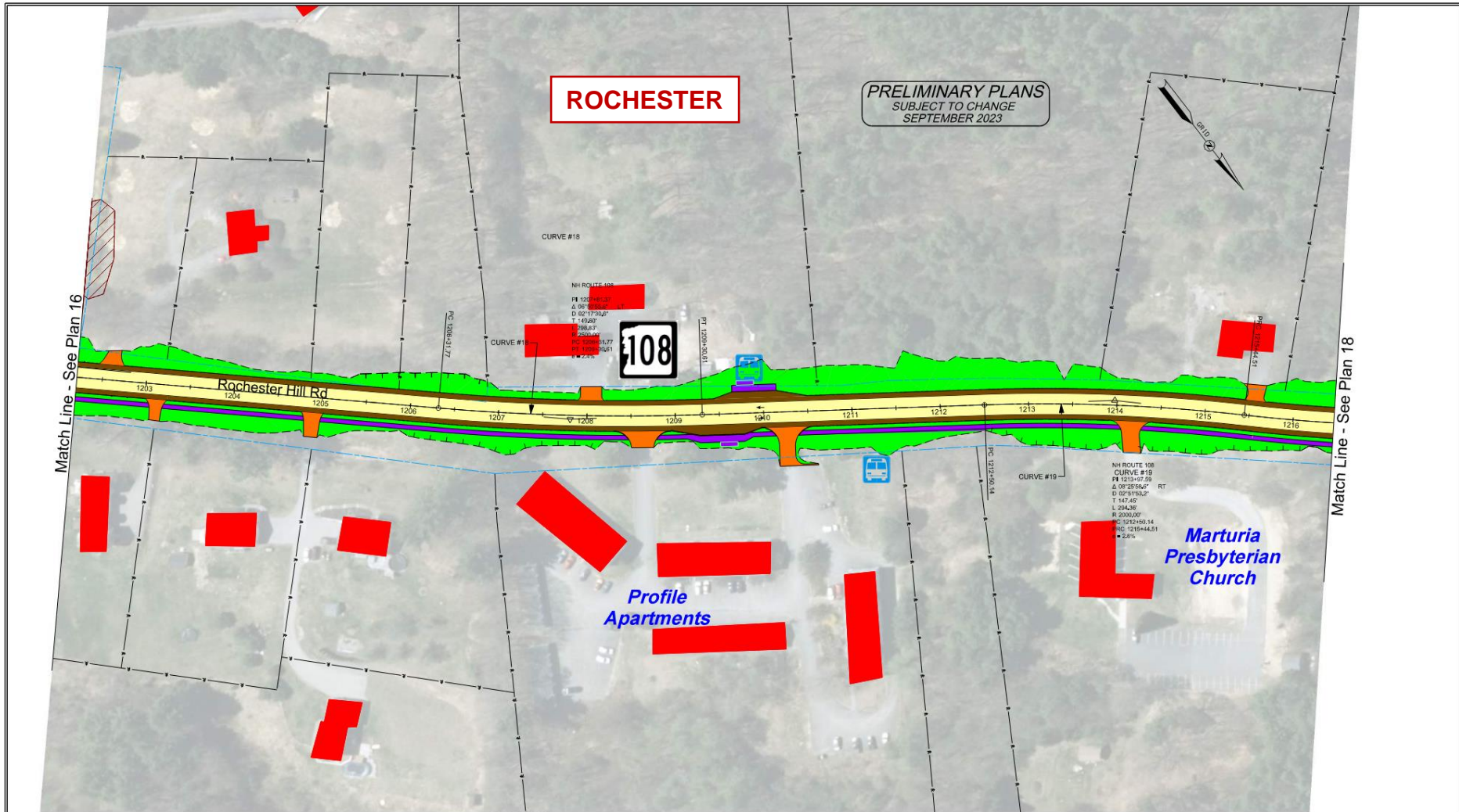
**PROPOSED IMPROVEMENTS
PLAN 16**

SCALE: 1" = 35' DATE: SEPTEMBER 2023 FIGURE: 16

35

McFarland Johnson

Proposed Improvements

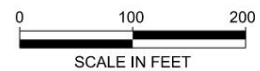


LEGEND

-  Bus Stop
-  Signalized Intersection
-  Historic Property

-  Fill Slope Limits
-  Cut Slope Limits
-  Parcel Boundaries
-  Existing Right-Of-Way

-  Wetlands
-  Potential Storm Water Treatment Site
-  Bus Shelter Accommodation



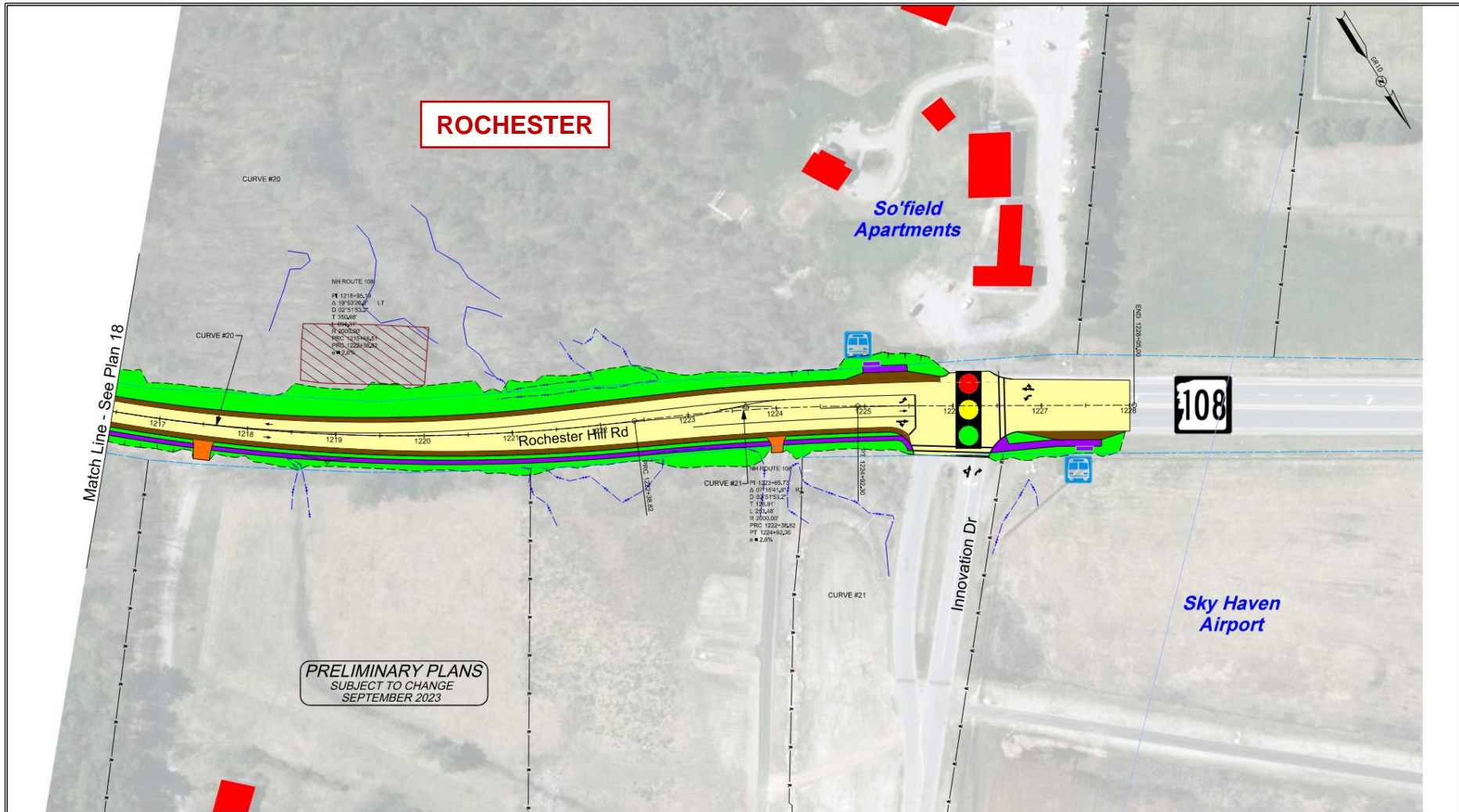
Route 108 Complete Streets
DOVER-SOMERSWORTH-ROCHESTER, 29604

PROPOSED IMPROVEMENTS
PLAN 17

SCALE: 1" = 36' DATE: SEPTEMBER 2023 FIGURE: 17



Proposed Improvements



PRELIMINARY PLANS
SUBJECT TO CHANGE
SEPTEMBER 2023

LEGEND

-  Bus Stop
-  Signalized Intersection
-  Historic Property

-  Fill Slope Limits
-  Cut Slope Limits
-  Parcel Boundaries
-  Existing Right-Of-Way

-  Wetlands
-  Potential Storm Water Treatment Site Bus Shelter Accommodation



Route 108 Complete Streets
DOVER-SOMERSWORTH-ROCHESTER, 29604

PROPOSED IMPROVEMENTS
PLAN 18

SCALE: 1" = 37' DATE: SEPTEMBER 2023 FIGURE: 18

 McFarland Johnson

Next Steps

- Finalize Proposed Improvements
- Prepare Environmental Document - Winter 2023/2024
- Public Hearing - Summer 2024
- Final Design – 2025 to 2026
- Construction - 2027

Questions / Comments

Project Contact:

Wendy Johnson, PE

NHDOT Project Manager

Wendy.A.Johnson@dot.nh.gov

www.108TriCityCompleteStreets.com